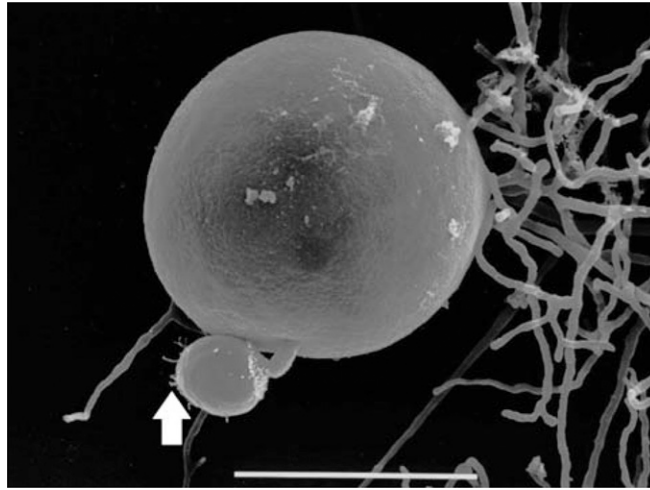


# Supporting Information

Martel et al. 10.1073/pnas.1307356110



**Fig. S1.** Scanning electron microscopic image of a *Batrachochytrium salamandrivorans* sporangium showing rhizoid formation on a germ tube-derived developing sporangium (arrow). (Scale bar, 10  $\mu\text{m}$ .)

**Table S1. Taxon sampling for phylogenetic analysis of 30 isolates**

Taxon	Strain	GenBank accession no.	
		18S	28S
<i>Arkaya lepida</i>	JEL93	AF164278	DQ273814
<i>Batrachochytrium dendrobatidis</i>	JEL423	DS022300	DS022300
<i>Batrachochytrium dendrobatidis</i>	JEL197	AF051932	AY546693
<i>Batrachochytrium dendrobatidis</i>	JAM81	GL882879	GL882879
<i>Boothomyces macroporosum</i>	PLAUS21	DQ322622	DQ273823
<i>Chytridium confervae</i>	ATCC24931	NSA	AY349065
<i>Chytrium hyalinus</i>	MP4	DQ536487	DQ273836
<i>Cladochytrium replicatum</i>	JEL180	AY546683	AY546688
<i>Entophlyctis</i> sp.	JEL 174	AY635824	DQ273782
<i>Entophlyctis helioformis</i>	JEL326	AY635826	DQ273784
<i>Entophlyctis luteolus</i>	JEL129	AH009064	AY442957
<i>Gaertneriomyces semiglobifer</i>	UCB-91-10	AF164247	DQ273778
<i>Homolaphlyctis polyrhiza</i>	JEL142	AF164299	EF634247
<i>Kappamyces laurelensis</i>	PL98	DQ536478	DQ273824
<i>Kochiomyces dichotomus</i>	BR269	FJ804151	FJ804155
<i>Lacustromyces hiemalis</i>	JEL31	AH009039	NSA
<i>Lobulomyces angularis</i>	JEL45	Af164253	DQ273815
<i>Mesochytrium penetrans</i>	X-10	FJ804149	FJ804153
<i>Monoblepharis macrandra</i>	M53B	AY349029	AY349061
<i>Obelidium mucronatum</i>	JEL57	AH009056	AY439071
<i>Oedogoniomyces</i> sp.	CR84	AY635839	DQ273804
<i>Olpidium brassicae</i>	SS218	DQ322624	DQ273818
<i>Polychytrium aggregatum</i>	JEL109	AY601711	AY546686
<i>Rhizoclosmatium globosum</i>	JEL06	AH009057	AY349063
<i>Rhizophlyctis harderi</i>	JEL171	AF164272	DQ273775
<i>Rhizophlyctis rosea</i>	JEL318	AY635829	DQ273787
<i>Spizellomyces punctatus</i>	ATCC48900	AY546684	AY546692
<i>Synchytrium decipiens</i>	DUH0009362	DQ536475	DQ273819
<i>Synchytrium macrosporum</i>	DUH0009363	DQ322623	DQ273820
<i>Triparticalcar</i> sp.	JEL555	FJ827658	FJ827683
Outgroup			
<i>Allomyces arbuscula</i>	Brazil2	AY552524	AY552525
<i>Catenaria anguillulae</i>	PL171	FJ804150	FJ804154
<i>Rozella allomycis</i>	UCB-47-54	AY635838	DQ273803

NSA, no sequence available.