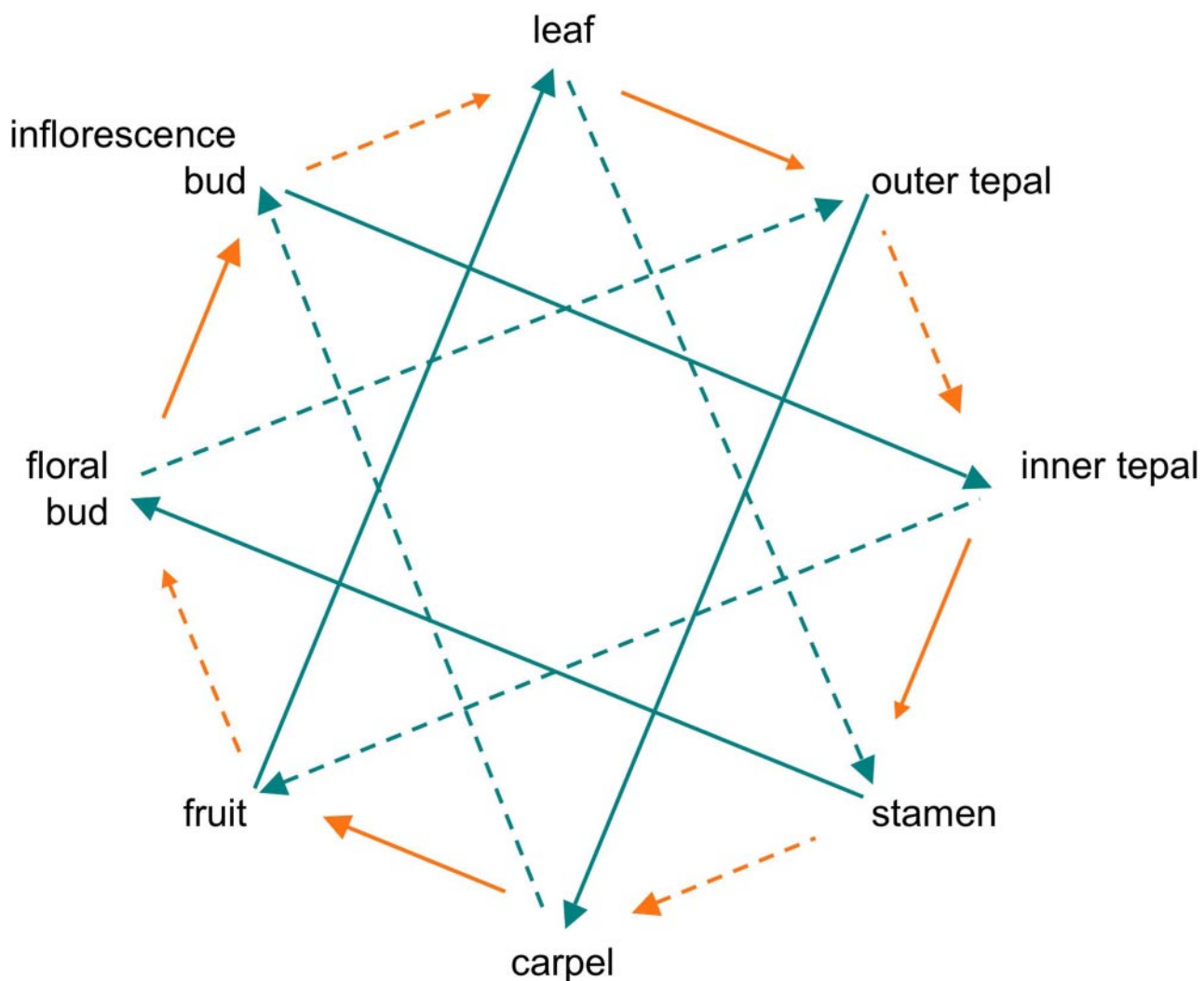


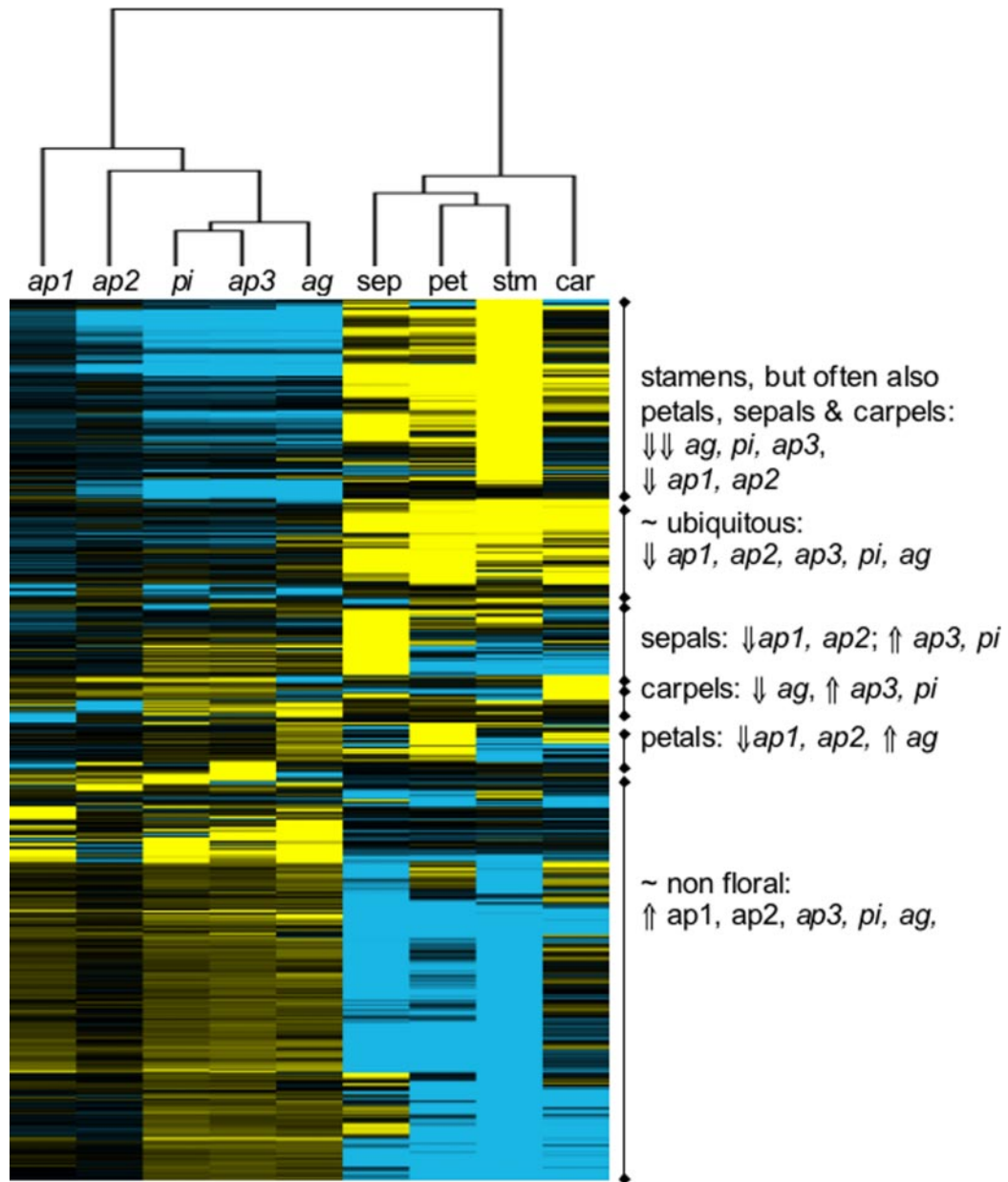
# Supporting Information

Chanderbali et al. 10.1073/pnas.0811476106

Supporting Information corrected 06/05/2009



**Fig. S1.** Interwoven double-loop experimental design. Each arrow represents an array; orange and teal colors indicate separate biologic replicates, and solid and dashed lines indicate separate RNA extractions; point is labeled with Cy5, base with Cy3.



**Fig. S2.** Positive *Arabidopsis*  $\log_2$  floral organ/leaf expression ratios map to correspondingly negative  $\log_2$  mutant/wild-type expression ratios. The scale of  $\log_2$  ratios ranges from saturated yellow (1 and higher = at least 2-fold upregulated) to saturated blue ( $-1$  and lower = at least 2-fold downregulated). The trends in gene expression levels in relevant mutants are given for organ-specific, and other, expression patterns. Data are from the AtGenExpress dataset (1) and from the Wellmer et al. dataset (2).

1. Schmid M, et al. (2005) A gene expression map of *Arabidopsis thaliana* development. *Nat Genet* 37:501–506.
2. Wellmer F, Riechmann JL, Alves-Ferreira M, Meyerowitz EM (2004) Genome-wide analysis of spatial gene expression in *Arabidopsis* flowers. *Plant Cell* 16:1314–1326.

**Table S1. Log<sub>2</sub> floral organ/leaf expression ratios of the MADS domain floral organ identity genes in *Arabidopsis* and *Persea* floral organs**

MADS domain gene	<i>Arabidopsis</i> AGI code/ <i>Persea</i> GenBank accession no.	Log <sub>2</sub> floral organ/leaf expression ratio			
		Sepals/outer tepals	Petals/inner tepals	Stamens	Carpels
<i>AGAMOUS</i>	At4 g18960	0.46	-0.01	7.20	5.57
<i>Persea AG.1</i>	DQ398021	1.74	1.91	5.30	6.27
<i>Persea AG.2</i>	DQ398022	1.81	1.91	2.44	3.36
<i>Persea AG.3</i>	DQ398023	0.36	0.43	2.51	4.38
<i>APETALA3</i>	At3 g54340	5.43	8.83	8.27	3.53
<i>Persea AP3</i>	AY337748	8.37	8.38	7.62	5.16
<i>PISTILLATA</i>	At5 g20240	2.71	8.054	7.13	-0.93
<i>Persea PI.1</i>	AY337738	6.37	6.19	6.08	1.97
<i>Persea PI.2</i>	DQ398020	4.66	5.11	5.10	0.61
<i>AGL6</i>	At2 g45650	2.04	3.26	1.23	1.68
<i>Persea AGL6.1</i>	DQ660395	6.07	5.94	0.77	1.53
<i>Persea AGL6.2</i>	DQ660396	6.12	5.95	0.68	1.51
<i>APETALA1</i>	At1 g69120	8.07	7.76	-0.94	-0.29
<i>Persea AP1</i>	DQ398015	0.66	0.33	-0.71	-1.13

AGI, Arabidopsis Genome Initiative.