

Supporting Information

Austin and Ballaré 10.1073/pnas.0909396107

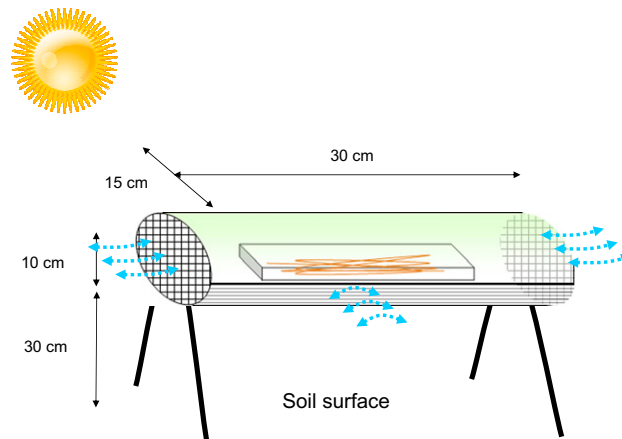


Fig. S1. Design of plastic filter boxes for attenuation treatments in field experiments with grassland litter. Open-topped plastic boxes were covered with plastic filters of varying solar radiation transmittance. Pale blue arrows indicate air movement.

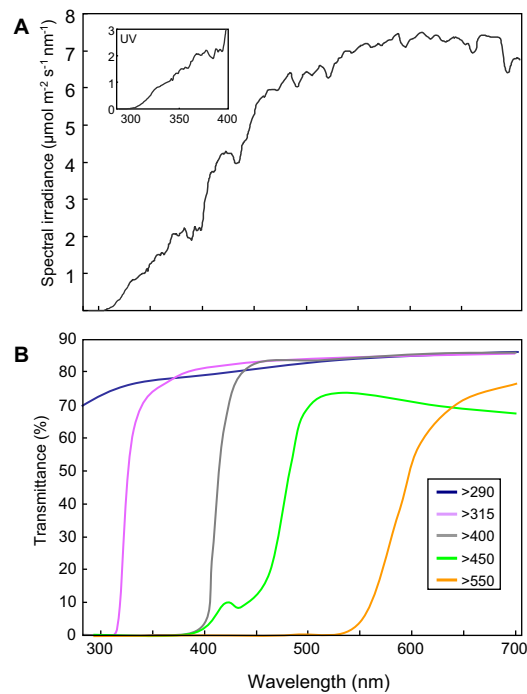


Fig. S2. Spectral solar irradiance and transmission of filters used in experiments. (A) Representative scan of the solar spectrum at the experimental field site in Buenos Aires in midsummer (January in Argentina). *Inset* shows enlarged view for UV range (for instrumentation, see *Materials and Methods*). (B) Transmittance spectra of the cutoff filters used in the photodegradation experiments with grass litter and CL substrates.