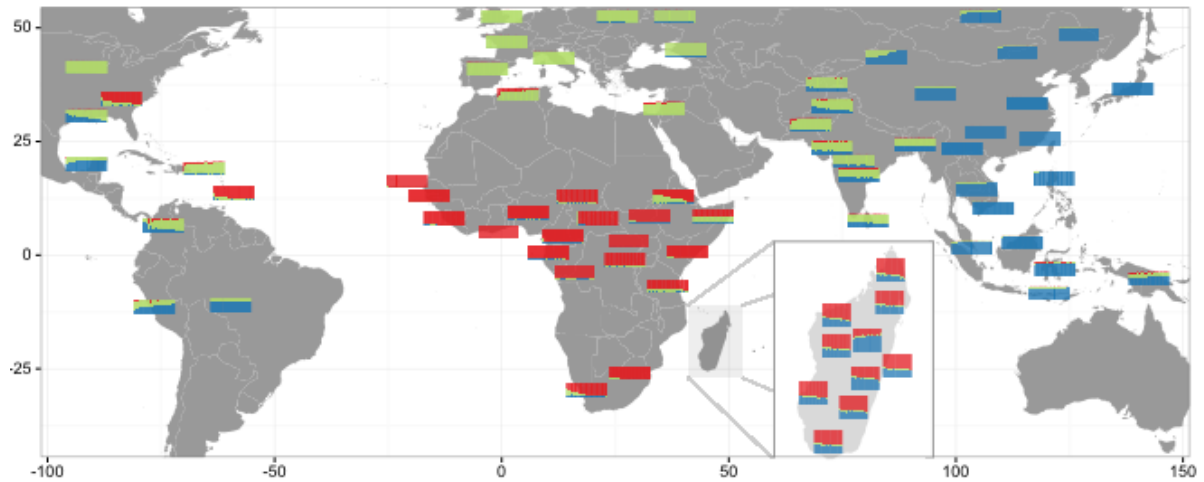


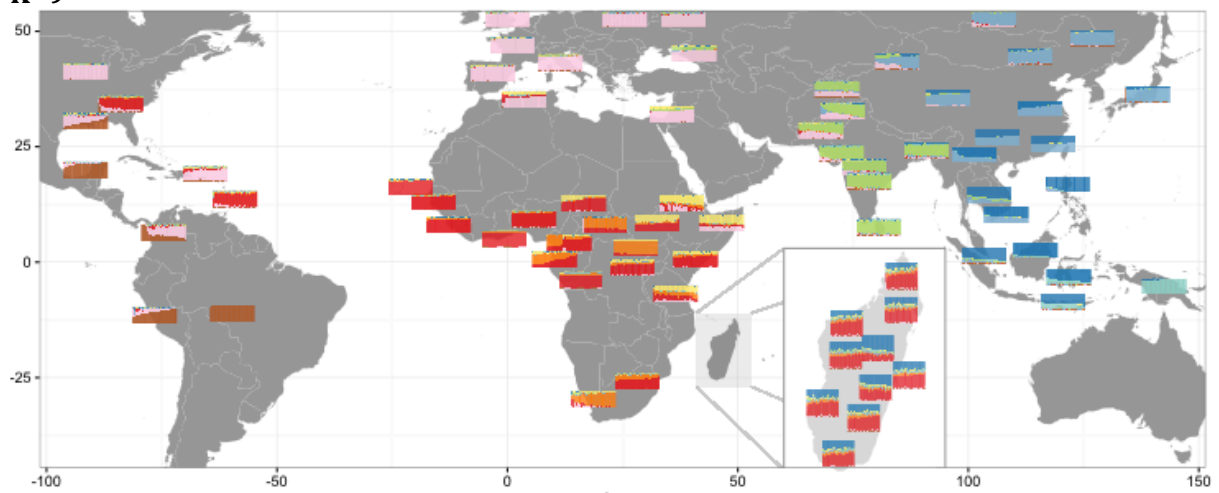
## Figure S2: Admixture Analysis

**S2.A)** ADMIXTURE plots for  $K=3$ , 9, and 23 of the low SNP density dataset, followed by the plot of cross-validation values.

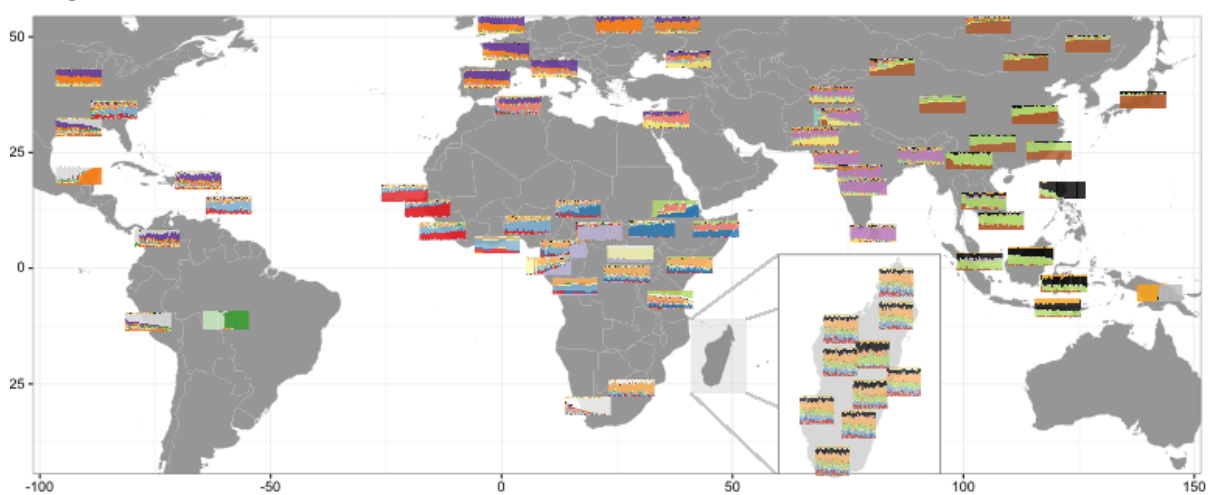
**K=3**



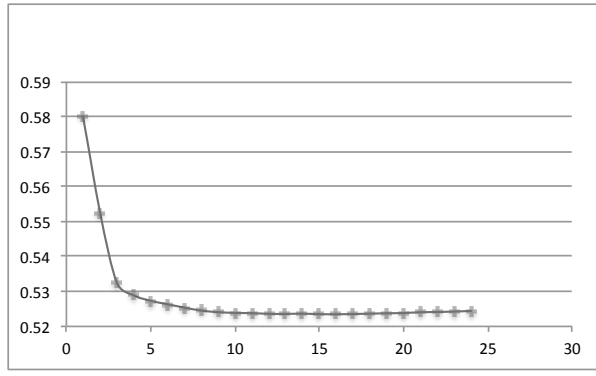
**K=9**



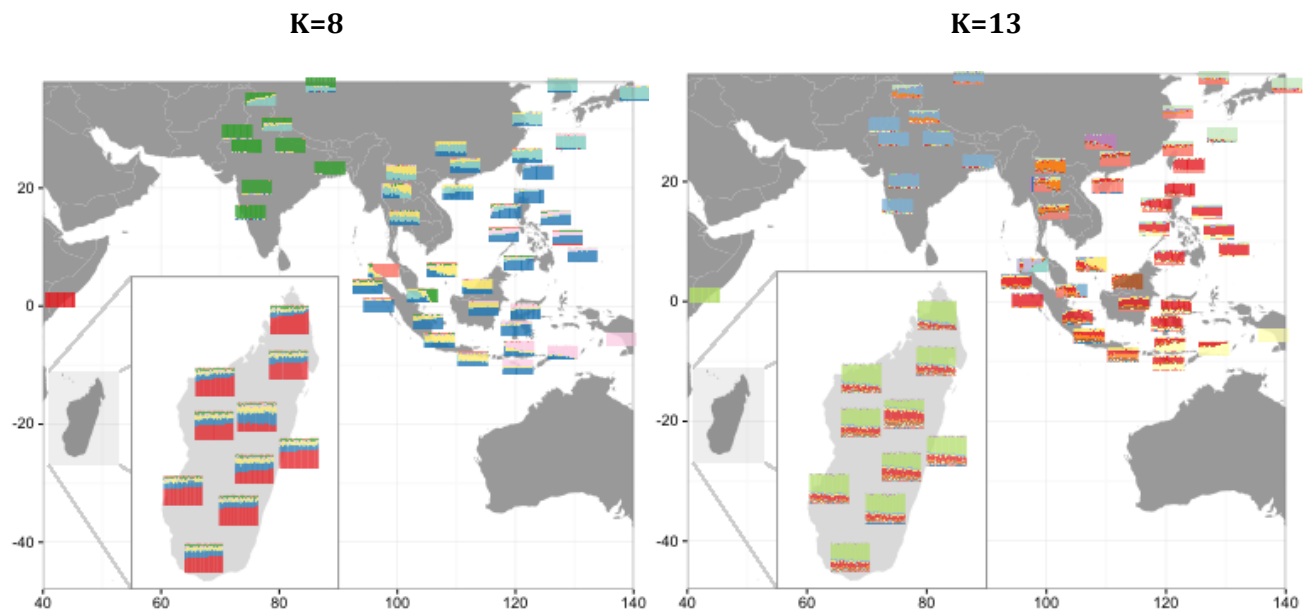
**K=23**



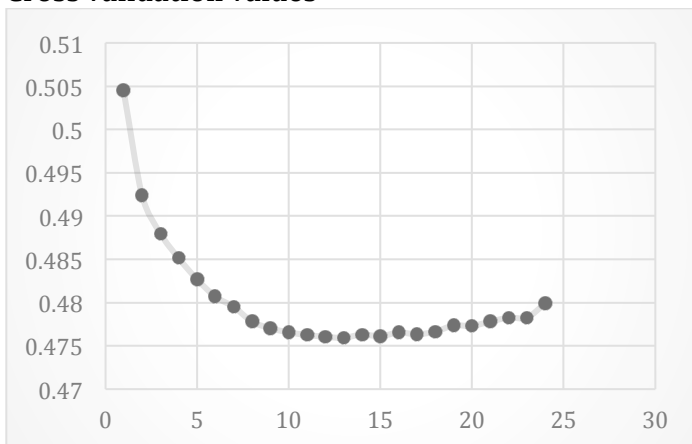
### Cross validation values



**S2.B)** ADMIXTURE plots for K=8 and K=13 with the PANASIAN dataset, followed by the plot of cross-validation values.

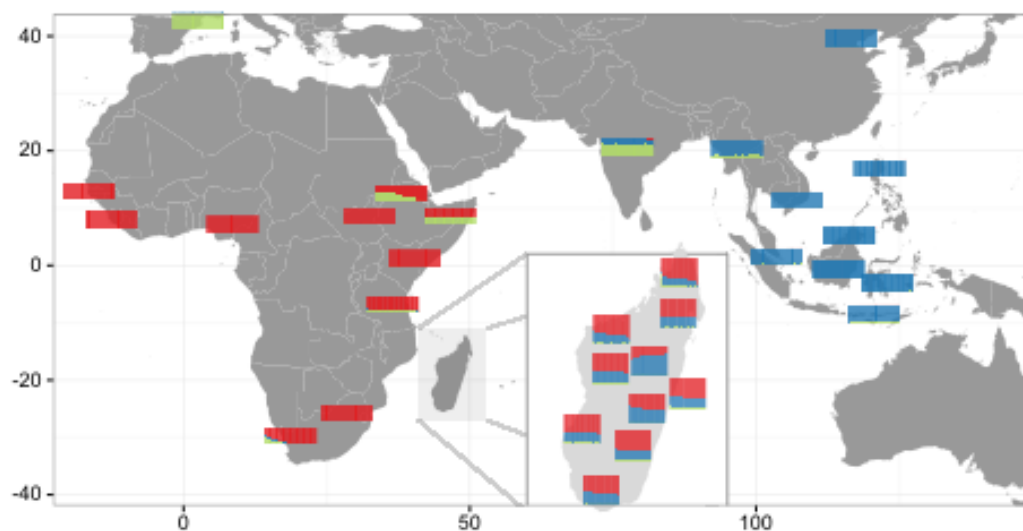


### Cross validation values



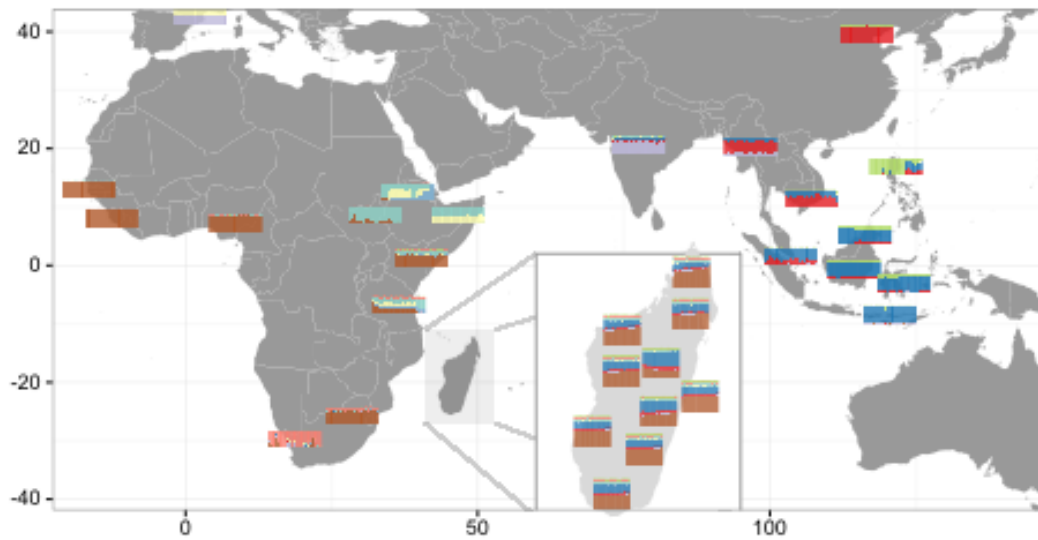
**S2.C)** ADMIXTURE plots for K=3 and K=9 of the high density dataset 1, followed by the plot of cross-validation values. Below each plot is the average fraction of each ancestry component in each Malagasy genetic group; ancestry components are colored according to the map and named according to the population/region that exhibits the highest frequency of that component

**K=3**



	Africa	East Asia	West Eurasia
<b>g01</b>	32.1% $\pm$ 0.5	65.3% $\pm$ 0.5	2.6% $\pm$ 0.1
<b>g02</b>	50.1% $\pm$ 0.5	46.8% $\pm$ 0.5	3.2% $\pm$ 0.1
<b>g03</b>	70.9% $\pm$ 0.7	22.6% $\pm$ 0.5	6.5% $\pm$ 0.5
<b>g04</b>	61.7% $\pm$ 0.3	34.2% $\pm$ 0.4	4.1% $\pm$ 0.1
<b>g05</b>	59.3% $\pm$ 0.3	37.1% $\pm$ 0.3	3.6% $\pm$ 0.1
<b>g06</b>	66.9% $\pm$ 0.5	29% $\pm$ 0.5	4.1% $\pm$ 0.1
<b>g07</b>	64.5% $\pm$ 0.3	32% $\pm$ 0.3	3.6% $\pm$ 0.1
<b>g08</b>	64.2% $\pm$ 0.2	32.2% $\pm$ 0.2	3.6% $\pm$ 0.1
<b>g09</b>	59% $\pm$ 0.3	37.4% $\pm$ 0.3	3.5% $\pm$ 0.1
<b>g10</b>	61.9% $\pm$ 0.3	34.3% $\pm$ 0.3	3.7% $\pm$ 0.2

K=9



	EAST ASIA			INDIA	AFRICA				
	Indonesia	Cont. Asia	Phillipines	India	Bantu	Hunter G.	A. Horn 1	A. Horn 2	East Af.
g01	46.9% ± 0.4	11.2% ± 0.2	7.2% ± 0.1	1.9% ± 0.1	25.7% ± 0.4	2% ± 0.1	0.5% ± 0.1	0.9% ± 0.1	3.6% ± 0.1
g02	32.7% ± 0.4	8.9% ± 0.4	5.1% ± 0.1	2% ± 0.1	39.9% ± 0.4	3.7% ± 0.1	0.8% ± 0.1	1.3% ± 0.1	5.7% ± 0.1
g03	15.4% ± 0.4	4% ± 0.2	2.5% ± 0.1	3.6% ± 0.3	55.9% ± 0.6	5.7% ± 0.1	1.4% ± 0.1	3.3% ± 0.3	8.1% ± 0.1
g04	24.2% ± 0.3	6% ± 0.2	3.8% ± 0.1	2.2% ± 0.1	48.9% ± 0.3	5% ± 0.1	1.1% ± 0.1	2% ± 0.1	6.7% ± 0.2
g05	25.9% ± 0.2	6.7% ± 0.2	4.3% ± 0.1	2% ± 0.1	46.9% ± 0.2	4.6% ± 0.1	1.2% ± 0.1	1.7% ± 0.1	6.7% ± 0.1
g06	20.2% ± 0.4	5.3% ± 0.2	3.1% ± 0.1	2.3% ± 0.1	53% ± 0.5	5.2% ± 0.1	1.3% ± 0.1	2% ± 0.1	7.5% ± 0.1
g07	22.4% ± 0.3	5.8% ± 0.2	3.5% ± 0.1	2.1% ± 0.1	51.2% ± 0.2	5.1% ± 0.1	1.1% ± 0.1	1.6% ± 0.1	7.3% ± 0.1
g08	22.8% ± 0.2	5.6% ± 0.1	3.5% ± 0.1	2% ± 0.1	50.7% ± 0.2	5.2% ± 0.1	1% ± 0.1	1.8% ± 0.1	7.5% ± 0.1
g09	26.6% ± 0.3	6.5% ± 0.2	4.1% ± 0.1	2% ± 0.1	46.8% ± 0.3	4.6% ± 0.1	1.1% ± 0.1	1.7% ± 0.1	6.7% ± 0.1
g10	24.3% ± 0.3	6.1% ± 0.2	3.6% ± 0.1	2% ± 0.1	49.2% ± 0.3	4.8% ± 0.1	1.2% ± 0.1	1.8% ± 0.1	6.9% ± 0.1

### Cross validation values

