

# The retinitis pigmentosa GTPase regulator, RPGR, interacts with the delta subunit of rod cyclic GMP phosphodiesterase

MARCO LINARI\*, MARIUS UEFFING†‡, FORBES MANSON‡§, ALAN WRIGHT§, THOMAS MEITINGER†, AND JÖRG BECKER\*¶

\*Max-Planck-Institut für Molekulare Physiologie, Abteilung Strukturelle Biologie, Rheinlanddamm 201, Postfach 102664, D-44026 Dortmund, Germany; †Abteilung Medizinische Genetik, Kinderklinik der Ludwig-Maximilians-Universität, Goethestr. 29, 80336 Munich, Germany; ‡Forschungszentrum für Umwelt und Gesundheit, National Research Center for Environment and Health, Ophthalmogenetics Group, D-85764, Neuherberg, Germany; and §Medical Research Council Human Genetics Unit, Western General Hospital, Crewe Road, Edinburgh EH4 2XU, United Kingdom

Edited by Thaddeus P. Dryja, Harvard Medical School, Boston, MA, and approved December 11, 1998 (received for review August 26, 1998)

**ABSTRACT** Recently, the retinitis pigmentosa 3 (RP3) gene has been cloned and named retinitis pigmentosa GTPase regulator (RPGR). The amino-terminal half of RPGR is homologous to regulator of chromosome condensation (RCC1), the nucleotide exchange factor for the small GTP-binding protein Ran. In a yeast two-hybrid screen we identified the delta subunit of rod cyclic GMP phosphodiesterase (PDE $\delta$ ) as interacting with the RCC1-like domain (RLD) of RPGR (RPGR<sup>392</sup>). The interaction of RPGR with PDE $\delta$  was confirmed by pull-down assays and plasmon surface resonance. The binding affinity was determined to be 90 nM. Six missense mutations at evolutionary conserved residues within the RLD, which were found in RP3 patients, were analyzed by using the two-hybrid system. All missense mutations showed reduced interaction with PDE $\delta$ . A non-RP3-associated missense substitution outside the RLD, V36F, did not abolish the interaction with PDE $\delta$ . PDE $\delta$  is widely expressed and highly conserved across evolution and is proposed to regulate the membrane insertion or solubilization of prenylated proteins, including the catalytic subunits of the PDE holoenzyme involved in phototransduction and small GTP-binding proteins of the Rab family. These results suggest that RPGR mutations give rise to retinal degeneration by dysregulation of intracellular processes that determine protein localization and protein transport.

Retinitis pigmentosa (RP) designates a heterogeneous group of hereditary retinal dystrophies characterized by impaired dark adaptation, progressive visual field defects, and severe reduction in visual acuity. X-linked RP (xLRP) is the most severe form of RP, which affects about 1 in 25,000 and leads to blindness by the third or fourth decade (1). Clinical surveys indicate that at least 16–33% of all RP patients show X-linked inheritance (2). The most common form of xLRP is RP type 3 (RP3), which affects about 70% of xLRP patients and is caused by mutations in a gene named *RPGR*.

The RP GTPase regulator (*RPGR*) gene codes for a 90-kDa protein that contains a weakly conserved nucleotide binding motif at the N terminus and a potential isoprenylation site at the carboxyl terminus (3). Most significantly, the N-terminal half of RPGR is homologous to the regulator of chromosome condensation (RCC1) (3, 4). RCC1 is a chromatin binding protein that is involved in cell cycle regulation. Biochemically, RCC1 is the guanine nucleotide exchange factor (GEF) for Ran (5, 6), a small GTP-binding protein that is essential for nucleo-cytoplasmic transport (7, 8). Recently, the three-dimensional structure of RCC1 has been determined (9). It consists of a seven-bladed propeller formed by internal re-

peats. This structural motif also is found in p532, a GEF for Rab and Arf proteins (10), indicating that RCC1-like proteins might be general guanine nucleotide exchange proteins. To investigate the role of the RCC1-like domain (RLD) of RPGR in RP3, we applied the yeast two-hybrid system to identify proteins interacting with the RLD of RPGR. We were able to identify the delta subunit of the rod cyclic GMP phosphodiesterase (PDE $\delta$ ) (11). The purified protein products of RPGR<sup>392</sup> and PDE $\delta$  interacted with high affinity, confirming the two-hybrid result. Mutants of RPGR found in RP3 patients showed decreased binding affinity when analyzed in the two-hybrid system. This interaction therefore provides an assay to determine the functional integrity of RPGR. PDE $\delta$  interacts with a small GTP-binding protein of the Rab family, Rab13 (12), and because RPGR is localized in the Golgi (13) it is likely that RPGR is involved in intracellular vesicle transport.

## MATERIALS AND METHODS

**Plasmids, Strains, and Mutagenesis.** A *lexA*-based two-hybrid system (provided by Stan Hollenberg, Vollum Institute, Portland, OR), containing pBTM116 as bait plasmid and pVP16 as library plasmid, together with the yeast reporter strain L40 (MATA *his3-200 trp1-901 leu2-3, 112 ade2 LYS2::(lexAop)4-HIS3 URA::(lexAop)8-lacZ GAL4 gal80*) was used. PDE $\delta$  was cloned as a *Bam*HI–*Eco*RI fragment into pcDNA3 (Invitrogen) for *in vitro* translation and into pGSTAcC5 (provided by Walter Kolch, Beatson Institute, Glasgow, U.K.) for expression in Sf9 cells (14). Full-length RPGR was cloned as a *Bam*HI fragment into pBTM116. Single point mutants of *RPGR* were generated by PCR (15). The resulting DNA fragments were cloned as *Bam*HI–*Pst*I fragments into pBTM116.

**Two-Hybrid Screening.** As bait, we used the first 392 aa of RPGR (RPGR<sup>392</sup>) generated by PCR. RPGR<sup>392</sup> was cloned as a *Bam*HI–*Pst*I fragment into pBTM116 and sequenced. A size-selected mouse embryo cDNA library from 9.5- to 10.5-day embryos cloned in pVP16 was used, and yeast strain L40 containing pBTM116-RPGR<sup>392</sup> was transformed as described (16, 17). Candidate clones were rescreened for interaction by using pBTM116, pBTM-lamin, pBTM-RCC1, and pBTM-Ran as controls.

**Two-Hybrid Interaction Assay.** *Saccharomyces cerevisiae* reporter strain L40 was cotransformed with pVP16-PDE $\delta$  and pBTM116-RPGR containing either wild-type (WT) or mutant

This paper was submitted directly (Track II) to the *Proceedings* office. Abbreviations: RP, retinitis pigmentosa; RP3, RP type 3; RPGR, RP GTPase regulator; RCC1, regulator of chromosome condensation; RLD, RCC1-like domain; PDE, phosphodiesterase; REP1, Rab escort protein 1; THULLY, tryptophane/histidine/uracil/leucine/lysine; UTL, uracil/tryptophane/leucine; GST, glutathione S-transferase; GSH, glutathione; NTA, nitrilotriacetic acid; WT, wild type; GDI, guanine nucleotide dissociation inhibitor.

¶To whom reprint requests should be addressed. e-mail: jbecker@mpi-dortmund.mpg.de.

The publication costs of this article were defrayed in part by page charge payment. This article must therefore be hereby marked "advertisement" in accordance with 18 U.S.C. §1734 solely to indicate this fact.

PNAS is available online at [www.pnas.org](http://www.pnas.org).

RPGR<sup>392</sup>. The resulting transformants were grown on medium lacking tryptophane, histidine, uracil, leucine, and lysine (THULLY dropout medium), containing 25 mM 3-aminotriazole. For qualitative interaction studies, the plates were incubated at 20°C, 26°C, 30°C, and 37°C for 6 days. Growth on THULLY plates was indicative of protein interaction. To determine protein interaction, yeast transformants were grown in medium lacking uracil, tryptophane, and leucine (UTL dropout medium) up to midlog phase (OD<sub>600</sub> of 1.0) at 30°C. Aliquots (0.1 ml) of each culture then were used in the *o*-nitrophenyl β-D-galactopyranoside assay as described (18).

**Detection of RPGR Expression in Yeast.** Yeast transformed with the appropriate hemagglutinin (HA)-tagged RPGR<sup>392</sup> constructs and pVP16-PDEδ were grown for 3 days on UTL selection medium at 30°C. Cells were lysed, and 30 μg of soluble protein was used for SDS gel electrophoresis and subsequent Western blotting. HA-tagged RPGR fusion proteins were detected by using anti-HA antibody (Boehringer Mannheim) and the ECL-PLUS system (Amersham).

**Protein Expression.** PGR<sup>392</sup> was cloned as an *Nco*I-*Bam*HI fragment into pET21d to generate a C-terminal His-tag fusion protein. Soluble protein was purified by using affinity purification on a Ni<sup>2+</sup> nitrilotriacetic acid (NTA) column (Quiagen). After ammonium sulfate precipitation the protein was resuspended in 50 mM Tris, pH 7.5 and dialyzed. Glutathione *S*-transferase (GST)-RPGR<sup>392</sup> and mutant derivatives were cloned *Bam*HI-*Xho*I into pGEX-KG. The 100,000 × *g* supernatants of lysate were used for glutathione (GSH) column affinity purification. The purified GST-fusion proteins were dialyzed against PBS.

**Expression and Purification of Recombinant Proteins in Sf-9 Cells.** PDEδ was cloned into pGSTAc5 to generate a N-terminal GST-fusion protein, expressed in Sf-9 cells, and purified to near homogeneity as described (14, 19).

**Protein Binding Assays.** [<sup>35</sup>S]PDEδ was synthesized by *in vitro* translation (TnT T7 Quick Coupled Transcription/Translation System, Promega). Ten microliters of the translation reaction, 15 μl of a 50% slurry of Ni<sup>2+</sup>NTA, and 15 μM of RPGR<sup>392</sup>-His<sub>6</sub> in a total volume of 100 μl of PBS was incubated for 30 min at room temperature and then washed three times with PBS before analyzing on a 15% SDS gel. The stained gel was treated for fluorography. Alternatively, the affinity of the GST-PDEδ-RPGR<sup>392</sup> interaction was quantified by copurification of GST-PDEδ and RPGR<sup>392</sup> using GSH-Sepharose (GSH pull-down experiment). GST-PDEδ (0.35 μM) was incubated with 0.12–3.0 μM RPGR<sup>392</sup> and GSH-Sepharose for 30 min at room temperature. The GSH-Sepharose was washed three times with PBS before analyzing proteins on a 15% SDS gel together with a BSA calibration standard (Pierce). Coomassie blue-stained protein bands were scanned and quantified with densitometric software (NIH IMAGE 1.6.1). For the GST-RPGR-PDEδ pull-down assay, 3 μM of WT or mutant GST-RPGR<sup>392</sup> (V36F, H98Q, F130C, and G215V) and 1 μM PDEδ were incubated with GSH-Sepharose in a total volume of 100 μl at 20°C or 30°C for 30 min. The GSH-Sepharose was washed three times with PBS before analyzing proteins on SDS gel. Coomassie blue-stained PDEδ protein bands were determined by densitometry. The amount of PDEδ bound to GST-RPGR<sup>392</sup>-WT was taken as 100% binding.

**Surface Plasmon Resonance.** Association and dissociation kinetics were determined by surface plasmon resonance (BIA-Core AB, Uppsala, Sweden) in the presence of 10 mM Hepes, pH 7.4/150 mM NaCl/5 mM MgCl<sub>2</sub>/0.0005% (wt/vol) Igepal CA-630 (Sigma). Anti-GST-antibodies were covalently coupled to the sensor chip. GST-PDEδ (0.4 μM) was bound to the anti-GST antibodies, followed by successive incubations with 0.1, 0.2, 0.4, 0.6, and 1.0 μM RPGR<sup>392</sup> as free ligand. Between the concentration changes the GST-PDEδ-RPGR<sup>392</sup> complex was dissociated by a washing step. To regenerate the chip

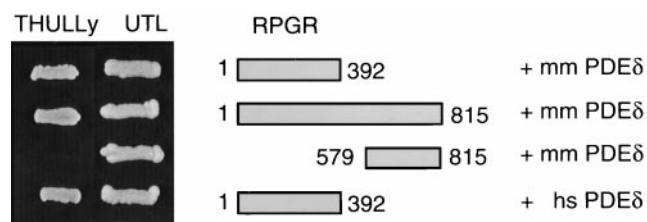


FIG. 1. Interaction of RPGR with PDEδ in the two-hybrid system. (Right) RPGR-PDEδ combinations used for yeast transformation are shown. (Left) Yeast clones growing on medium selecting either for the presence of the two two-hybrid plasmids (UTL dropout medium) or selecting for protein-protein interaction (THULLY dropout medium). Mouse (mm) PDEδ interacts with RPGR<sup>392</sup> and full-length RPGR, whereas the C-terminal part of RPGR (amino acids 579–815) alone does not bind nor does it contribute to the binding of PDEδ as there is no difference in binding between full-length and C terminally truncated RPGR. RPGR also interacts with the human (hs) isoform of PDEδ.

matrix, noncovalently bound ligands were removed by 20 mM glycine, pH 2.0 and 0.005% SDS. GST bound to the sensor chip was used as a control to verify complete dissociation of noncovalently bound ligands and to account for unspecific

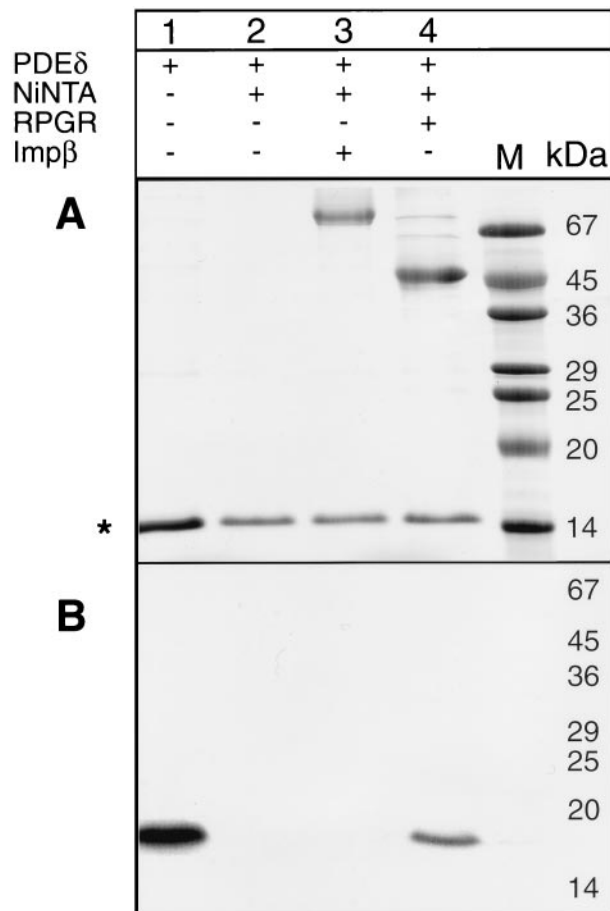


FIG. 2. PDEδ binds to His<sub>6</sub>-RPGR<sup>392</sup> *in vitro*. <sup>35</sup>S-methionine-labeled PDEδ, synthesized by *in vitro* translation, was incubated with purified His<sub>6</sub>-RPGR<sup>392</sup> and repurified by using Ni<sup>2+</sup>NTA. (A) A Coomassie-stained SDS acrylamide gel containing <sup>35</sup>S-methionine-labeled PDEδ (lane 1), proteins of the PDEδ *in vitro* translation reaction bound to Ni<sup>2+</sup>NTA (lane 2), <sup>35</sup>S-labeled PDEδ and His<sub>6</sub>-tagged importin β bound to Ni<sup>2+</sup>NTA (lane 3), and <sup>35</sup>S-labeled PDEδ and His<sub>6</sub>-RPGR<sup>392</sup> bound to Ni<sup>2+</sup>NTA (lane 4). Proteins of the *in vitro* translation reaction binding unspecifically to Ni<sup>2+</sup>NTA are indicated by \*. (B) An autoradiogram of the above SDS acrylamide gel. In lanes 1 and 4, radiolabeled PDEδ is detected.

binding. Association and dissociation constants were calculated (BIAEVALUATION 2.1 software) by using single exponential fit with drift (details in *Results*).

### RESULTS

#### Identification of PDE $\delta$ as an Interacting Protein of RPGR.

To identify proteins interacting with RPGR, a yeast two-hybrid screen was undertaken by using the RLD of RPGR (RPGR<sup>392</sup>) as bait in a *lexA*-based two-hybrid system together with a size-selected mouse embryo cDNA library. We obtained 40 potential candidate clones, eight of which coded for PDE $\delta$ . None of these eight clones were able to interact with control proteins lamin, Ran, or RCC1, indicating that the interaction of RPGR<sup>392</sup> with PDE $\delta$  is specific. The mouse PDE $\delta$  clones contained the complete coding region except for the first six N-terminal amino acids. However, in a control assay, the complete coding regions of mouse and human PDE $\delta$  also were able to interact with human RPGR<sup>392</sup> and with the full-length RPGR, but not with the carboxyl-terminal domain of RPGR (Fig. 1). Thus, the C-terminal half of RPGR is not required for PDE $\delta$  binding. Deleting as few as 23 aa from either end of PDE $\delta$  abolished the interaction with RPGR (data not shown), indicating the minimal domains necessary for this interaction.

**RPGR<sup>392</sup> Binds PDE $\delta$  with High Affinity.** We used three independent methods to verify the interaction of RPGR<sup>392</sup> and PDE $\delta$ . First, PDE $\delta$  was expressed *in vitro* by using rabbit reticulocyte translation extracts, as soluble protein could not be obtained from bacterial expression systems. Recombinant His-tagged RPGR<sup>392</sup> (His-RPGR<sup>392</sup>) purified from bacteria was added to *in vitro*-translated PDE $\delta$ . The formation of a PDE $\delta$ -His-RPGR<sup>392</sup> complex was monitored by affinity copurifying His-RPGR<sup>392</sup> and PDE $\delta$  by using Ni<sup>2+</sup>NTA beads. The results verified the earlier two-hybrid result that PDE $\delta$  binds specifically to RPGR<sup>392</sup> *in vitro* (Fig. 2). Second, we expressed a GST-PDE $\delta$  fusion protein by using the baculovirus expression system as described (14). To determine the affinity of this interaction, constant amounts of GST-PDE $\delta$  were incubated with increasing amounts of RPGR<sup>392</sup>. The resulting protein complex was copurified in batch by using GSH-Sepharose. The GST-PDE $\delta$ -RPGR<sup>392</sup> complex was analyzed on a Coomassie-stained SDS polyacrylamide gel. The intensity of the resulting protein bands were digitally recorded and

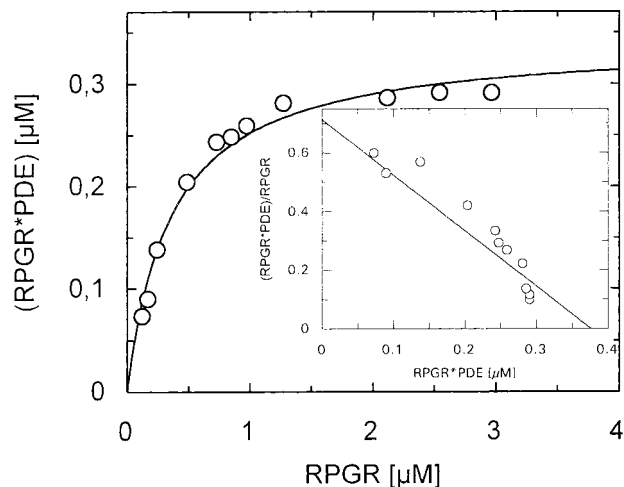


FIG. 3. Quantitative determination of the GST-PDE $\delta$ -RPGR interaction. GST-PDE $\delta$  (0.35  $\mu$ M) was incubated with RPGR<sup>392</sup> concentrations ranging from 0.12 to 3.0  $\mu$ M. The protein complex was purified by using GSH-Sepharose and analyzed on a SDS polyacrylamide gel. The protein bands were densitometrically quantified by using an internal BSA calibration standard (Pierce). The  $K_D$  was determined by Scatchard plot analysis to a value of about 400 nM.

quantified by using an internal BSA standard that was present on the same gel. The affinity of the GST-PDE $\delta$ -RPGR<sup>392</sup> interaction was calculated to be about 400 nM by using the Scatchard plot analysis (Fig. 3).

Third, the BIAcore instrument (20, 21) was used to measure the interaction of the two proteins directly. The GST-PDE $\delta$  fusion protein was attached to the dextran matrix containing an covalently bound anti-GST antibody as described (22). This method determines the on rates as well as the off rates in a single experiment. During the dissociation period, free binding sites become increasingly available, and we observed significant rebinding of the ligand, which was most pronounced at the lowest ligand concentration. The rebinding effect decreases the apparent dissociation rate and would lead to an overestimation of the affinity. The binding effect is negligible at high RPGR concentrations in the first half of the kinetic where more than 50% of the binding sites are still occupied. Therefore, the dissociation rate was calculated within a 5- to 40-sec time window of the dissociation period after which 50% of the

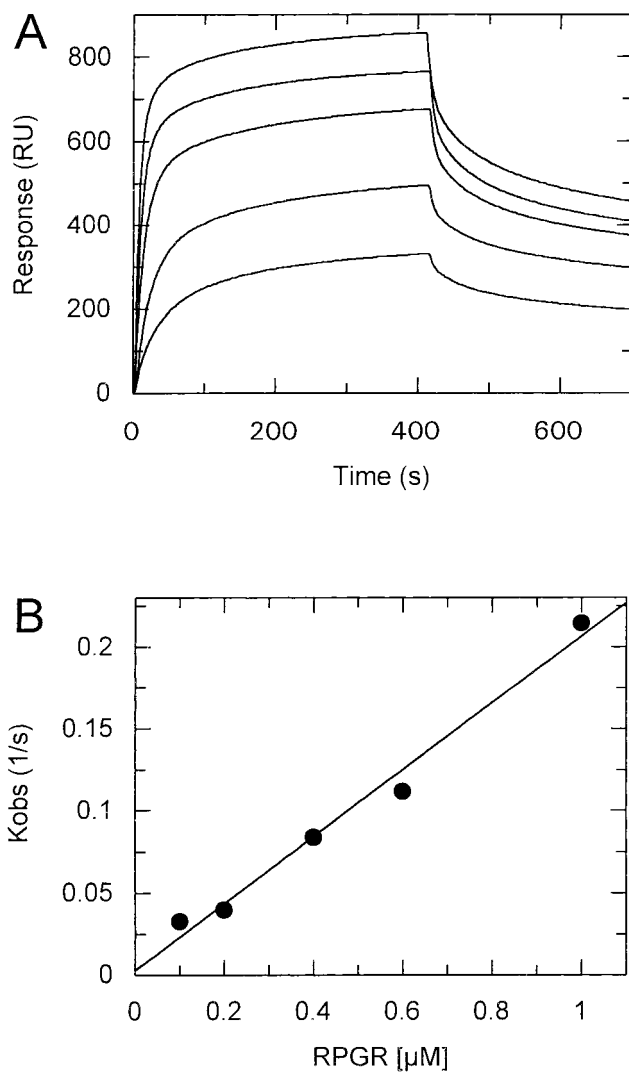


FIG. 4. Direct measurement of RPGR binding to GST-PDE $\delta$  by surface plasmon resonance technique. (A) Association of 0.1, 0.2, 0.4, 0.6, and 1.0  $\mu$ M RPGR<sup>392</sup> (from bottom to top) to GST-PDE $\delta$  and subsequent dissociation of RPGR. (B) The association rate constant ( $k_{on}$ ) was calculated by fitting  $k_{obs}$  versus the RPGR<sup>392</sup> concentration ( $k_{on} = 2.04 \times 10^5 \text{ sec}^{-1} \cdot \text{M}^{-1}$ ). The dissociation rate constant was calculated by fitting the data to first-order kinetics ( $k_{off} = 0.018 \text{ sec}^{-1}$ ). The resulting  $K_D$  was calculated to be  $8.82 \times 10^{-8} \text{ M}$  (for details see text).



protein complex is dissociated. We determined a  $k_{\text{off}}$  of 0.018  $\text{sec}^{-1}$  and a  $k_{\text{on}}$  of  $2.04 \times 10^5 \text{ sec}^{-1} \cdot \text{M}^{-1}$  with a calculated  $K_{\text{D}}$  of 90 nM (Fig. 4). The BIAcore determines the affinity kinetically, whereas the pull-down assay determines the affinity at the equilibrium. The equilibrium, however, is distorted by extensive washes of the protein complex, which is why this method can be considered only semiquantitative. Given this, the 4-fold difference in affinity is relatively small and the affinity of 90 nM sufficiently high to be physiologically relevant.

#### Binding of PDE $\delta$ Decreased in RPGR Missense Mutants.

Various missense and nonsense mutations in the RPGR gene have been reported in RP3 patients (3, 23, 24). Although it is safe to assume that the nonsense mutations give rise to truncated and unstable proteins, none of the missense mutations have been shown to impair RPGR function. In the following experiments, we used the PDE $\delta$ -RPGR interaction in the two-hybrid system to investigate various RPGR missense mutations. The two-hybrid analysis demonstrates that all of the RPGR mutations found in the RLD of RPGR significantly decreased the binding to PDE $\delta$  in a temperature-sensitive fashion (Fig. 5). It had been shown previously that the two-hybrid system is suitable for evaluating the relative affinity of two

proteins that are difficult to express or purify (25). Using the  $\beta$ -galactosidase activity as a quantitative measure of the interaction between RPGR and PDE $\delta$  in the two-hybrid system revealed that all RPGR mutants have severely reduced affinities. Even the weakest RPGR mutant, P235S, had a 40% reduction in activity (Fig. 6B). Moreover, a RPGR missense mutation (V36F), which shows no signs of retinal degeneration (T.M., unpublished work) did not show decreased binding to PDE $\delta$  (Fig. 6B). To exclude the possibility that the differences in  $\beta$ -galactosidase activity merely reflected decreased protein stability or different expression levels of the RPGR mutants, we performed Western blot analysis using an antibody against the hemagglutinin tag of the LexA-RPGR fusion protein. All LexA-RPGR derivatives were expressed to similar amounts in yeast at 30°C (Fig. 6A). As the binding appears to be temperature-sensitive in the two-hybrid assay and because some recombinant RPGR mutant proteins could not be purified because of stability problems, we cannot exclude the possibility that some RPGR mutations cause misfolding. Decreased protein expression, however, did not correlate with decreased binding affinity as judged by two-hybrid analysis (compare H98Q with P235S). Therefore, by using purified recombinant GST-RPGR mutant proteins in pull-down experiments, we confirmed that RPGR mutant proteins bind less efficiently to PDE $\delta$  (Fig. 7).

## DISCUSSION

Combining yeast two-hybrid analysis with biochemical and biophysical protein binding assays, we have shown that PDE $\delta$  binds to the RLD of RPGR. The high affinity of RPGR<sup>392</sup> for PDE $\delta$ , which is determined to be about 90 nM by plasmon surface resonance, is sufficient to account for binding under physiological circumstances. The binding appears to be independent of the fusion moieties because native PDE $\delta$  synthesized *in vitro* bound to GST-RPGR<sup>392</sup> and His-tagged RPGR<sup>392</sup> bound to GST-tagged PDE $\delta$ . The tissue distribution of human PDE $\delta$  parallels the ubiquitous expression of RPGR

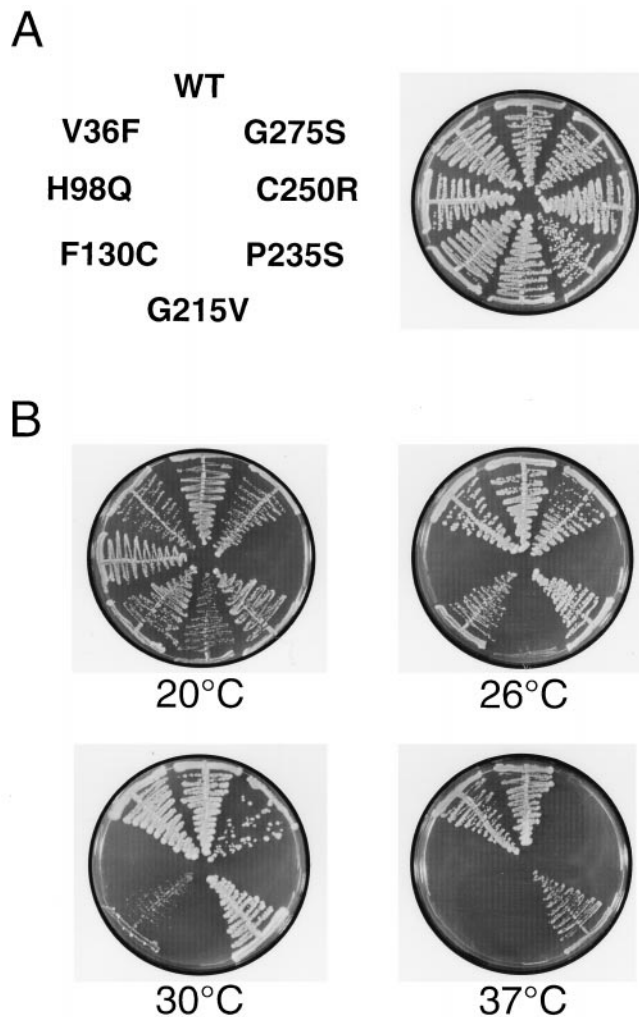


FIG. 5. Mutations within the RLD of RPGR interfere with the binding of PDE $\delta$  in a temperature-dependent manner. (A) The positions of the individual mutations are indicated (*Left*), and growth of the respective yeast clones under nonselective conditions (UTL) at 30°C is shown (*Right*). (B) Yeast clones grown on selective medium (THULLY) at 20°C, 26°C, 30°C, and 37°C were assayed for RPGR-PDE $\delta$  interaction.

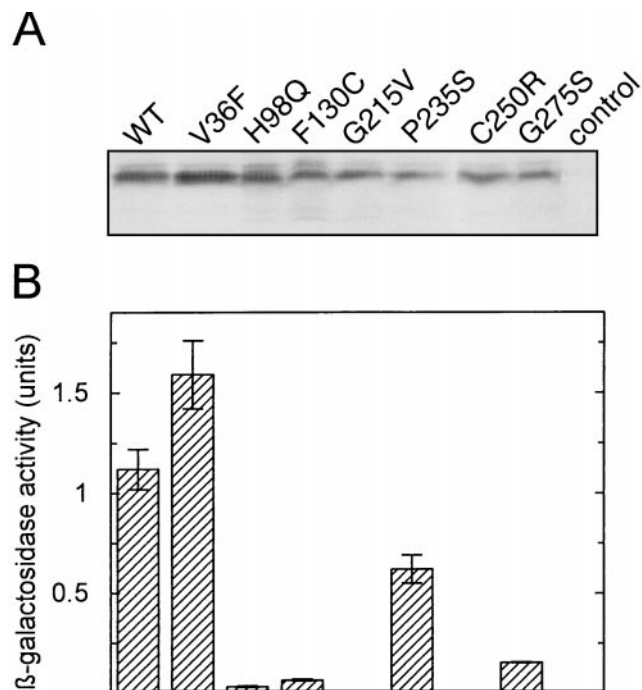


FIG. 6. Quantitative determination of the RPGR<sup>392</sup>-PDE $\delta$  interaction by liquid  $\beta$ -galactosidase assay. (A) Yeast liquid cultures were grown at 30°C to an OD<sub>600</sub> of 1.0. Expression of RPGR<sup>392</sup> was followed by Western blot analysis. (B) The  $\beta$ -galactosidase activity, the parameter for protein-protein interaction, was detected as described (18).

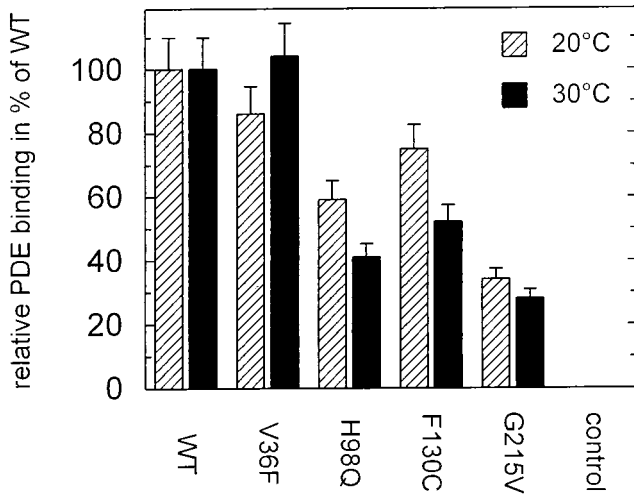


Fig. 7. Relative PDE $\delta$  binding of GST-RPGR<sup>392</sup> mutants. PDE $\delta$  (1  $\mu$ M) and 3  $\mu$ M of WT or mutant GST-RPGR<sup>392</sup> were incubated with GSH-Sepharose at 20°C and 30°C for 30 min. The GSH-Sepharose bound protein complexes were applied onto a SDS/PAGE after washing with PBS. Band intensities of the PDE $\delta$  were determined by densitometric software. The intensity of the PDE $\delta$  bound to WT-RPGR<sup>392</sup> was set to 100%.

(3, 26) and is greatly enhanced in retina (A.W., unpublished work). Together with the high affinity, we conclude that the RLDs of RPGR and PDE $\delta$  are likely to be genuine binding partners. The RLDs of RPGR and RCC1 are proposed to have a very similar protein fold, so the recently solved structure of RCC1 (9) was used as a model to predict the nature of the mutations in RPGR. With the exception of F130C, all mutations are within conserved parts of the structure that are necessary to maintain the protein fold and therefore are likely to destabilize the overall structure of RPGR. In this study, we have developed a two-hybrid assay that can be used to assess the functionality of RPGR. In this assay, six missense mutations found in RP3 patients do not interact with PDE $\delta$  whereas an RPGR variant not causing RP still interacts. This correlation indicates that the failure to interact with PDE $\delta$  might be

the cause of or contribute to RP3 and is in keeping with the observation that the most severe forms of RP3 have mutations in the RLD of RPGR (24).

Human PDE $\delta$  codes for a 17.4-kDa protein and is strongly conserved in other species (26, 27), sharing 97–99% overall identity between mouse, bovine, and human and retaining 70% similarity to its orthologue in *Caenorhabditis elegans* (Fig. 8), which lacks ocular tissue. Interestingly, PDE $\delta$  shares sequence homology with the human *HRG4* gene. *HRG4* and its orthologues in rat and *C. elegans*, which encode 23- to 27-kDa proteins of unknown function (28), are localized to photoreceptor cells in mammals (29) and to the nervous system of the nematodes (30).

PDE $\delta$  was isolated as a fourth subunit of bovine rod PDE (PDE6). In vertebrate phototransduction PDE6 is the effector for the trimeric G protein transducin after its activation by light-sensitive rhodopsin molecules in the retina. Mutations in the genes coding for the  $\alpha$  and  $\beta$  subunit of PDE6 have been shown to cause autosomal forms of retinal degeneration (31–34) or stationary night blindness (35). However, no mutations have yet been found in the PDE $\delta$  gene in patients with autosomal recessive RP. In the case of PDE $\delta$ , this is not surprising because it is abundantly expressed in all tissues and highly conserved across evolution, so most likely PDE $\delta$  serves a more general function in tissues other than the retina.

PDE $\delta$  was shown to bind the prenylated C terminus of PDE $\beta$  (36) and the mouse orthologue of human RPGR, mRPGR, is localized in the Golgi apparatus via its C-terminal prenyl modification (13). This finding raised the possibility that PDE $\delta$  could bind to the prenylated C terminus of RPGR. However, the human RPGR<sup>392</sup> deletion used in this study lacks the C-terminal prenylation motif and was purified from bacteria that precludes prenyl modifications. Therefore, in addition to the prenyl-dependent binding, PDE $\delta$  also must have a second prenyl-independent binding mode that is represented by the binding to the RLD of RPGR. The complex of RPGR and PDE $\delta$  is reminiscent of the  $\beta\gamma$  complex of trimeric G proteins whose  $\beta$ -subunit also consists of a propeller structure, albeit unrelated to that of RCC1. The  $\beta\gamma$  complex serves as a guanine nucleotide dissociation inhibitor (GDI) for the guanine nucleotide binding  $\alpha$ -subunit, raising the possibility that

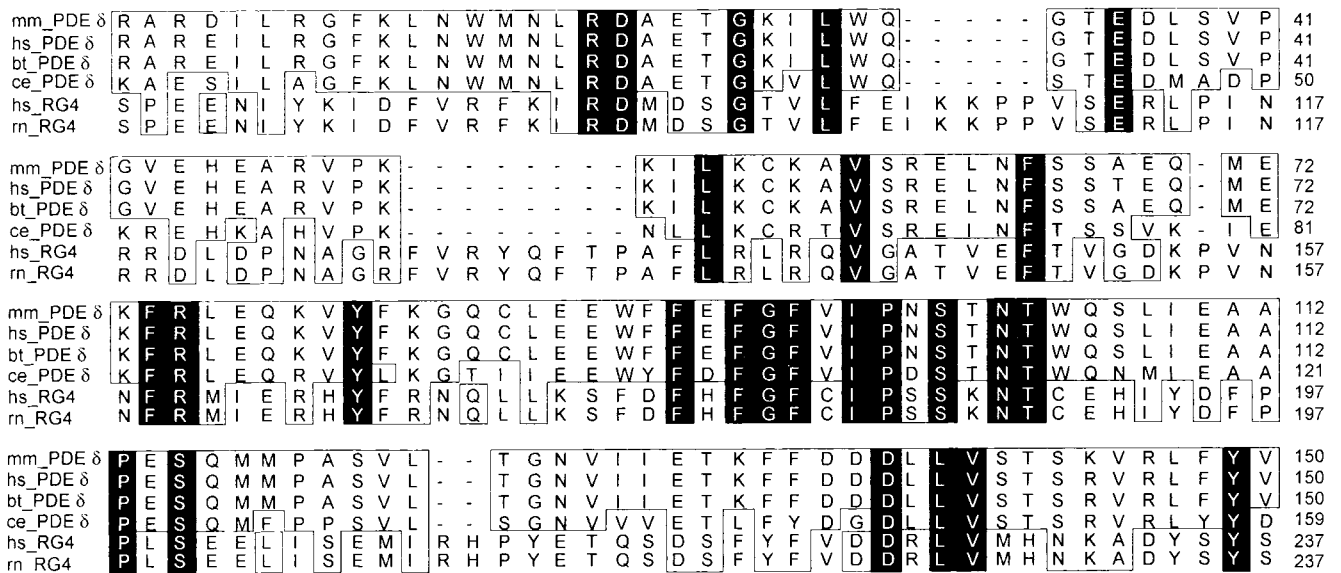


Fig. 8. PDE $\delta$  is highly conserved. Amino acid sequence alignment of PDE $\delta$  from bovine (bt\_PDE $\delta$ ; GenBank accession no. U65073), human (hs\_PDE $\delta$ ; GenBank accession no. AF022912), mouse (mm\_PDE $\delta$ ; GenBank accession no. AA726559) and *C. elegans* (ce\_PDE $\delta$ ; GenBank accession no. U14635). The sequence identity ranges from 70% to 99%. Identical residues are shaded in black and structurally conserved residues are boxed. Highly related to PDE $\delta$  is hRG4 (hs\_RG4; GenBank accession no. U40998), a protein highly expressed in human retina that also has been found in rat (rn\_RG4; GenBank accession no. U40999), and *C. elegans* (unc119; not shown; GenBank accession no. A38976).

the RPGR-PDE $\delta$  complex also might bind to an  $\alpha$ -subunit-related protein.

PDE6 is attached to the disc membranes of rod outer segments via the isoprenylated C termini of the  $\alpha$  and  $\beta$  subunit (37, 38). PDE $\delta$  recognizes isoprenylated PDE6 and is able to solubilize the membrane-bound form of PDE6 under physiological conditions (36). However, as the solubilization of PDE6 does not alter its enzyme activity, it is conceivable that PDE $\delta$  serves a regulatory function by translocating PDE6 from the membrane to the cytoplasm. This function of PDE $\delta$  is reminiscent of the function of Rab escort protein REP1 and GDI. REP1 is a subunit of the geranyl transferase II essential for prenylation and a GDI of GTP-binding proteins such as Rab27 (39). A loss of function mutation in the REP1 gene is the cause for choroideremia, a form of hereditary tapeto-retinal degeneration (39, 40). The membrane association of small GTP-binding proteins also can be mediated by GDIs and accompanied by GDP/GTP exchange (41). Consistent with the idea that PDE $\delta$  might have GDI-like function are observations that PDE $\delta$  binds to modified and unmodified small GTP-binding proteins like Rab13 (12), Rho6 (J. Camonis and Y. Mahe, personal communication), and proteins of the Arl family, Arl3 and Arl184 (M.L. and J.B., unpublished work). Because RPGR is homologous to the guanine nucleotide exchange factor of the small GTP-binding protein Ran, it is conceivable that the RLD of RPGR could be a guanine nucleotide exchange factor for an as-yet-unidentified GTP-binding protein. Another protein that contains two RLDs is p532. Interestingly, like mRPGR, p532 is localized in the Golgi and in addition has guanine nucleotide exchange activity for ARF and Rab proteins (10). However, we could not detect any guanine nucleotide exchange activity of RPGR<sup>392</sup> for Arl3, Arl184, or Ran.

Regardless of whether RPGR serves as a guanine nucleotide exchange factor or as a GDI in complex with PDE $\delta$ , both alternatives suggest that RPGR interacts with an as-yet-unidentified GTP-binding protein. At this point it is impossible to predict whether this protein will be a small Ras-related GTP-binding protein or an  $\alpha$ -subunit of a trimeric G protein. Although we cannot exclude a role of RPGR in phototransduction, the bulk of the evidence suggests a role for RPGR in the regulation of intracellular vesicle trafficking.

We thank Caro Koerner and Beatrix Scheffer for excellent technical assistance; Walter Kolch for valuable advice with the baculovirus expression system; Jürgen Kuhlmann, Benjamin Bader, and Carolina Villa Braslavsky for discussion; Jaques Camonis and Yannick Mahe for sharing information before publication, and Alfred Wittinghofer for continuous support. This work was funded in part by a grant from the Deutsche Forschungsgemeinschaft (J.B. and T.M.), The Foundation Fighting Blindness, and British Retinitis Pigmentosa Society (A.W.).

1. Dryja, T. P. & Li, T. (1995) *Hum. Mol. Genet.* **4**, 1739–1743.
2. Haim, M. & Rosenberg, T. (1993) *Acta Ophthalmol.* **71**, 597–605.
3. Meindl, A., Dry, K., Herrmann, K., Manson, F., Ciccodicola, A., Edgar, A., Carvalho, M. R., Achatz, H., Hellebrand, H., Lennon, A., *et al.* (1996) *Nat. Genet.* **13**, 35–42.
4. Ohtsubo, M., Okazaki, H. & Nishimoto, T. (1989) *J. Cell Biol.* **109**, 1389–1397.
5. Bischoff, F. R. & Ponstingl, H. (1991) *Nature (London)* **354**, 80–82.
6. Klebe, C., Prinz, H., Wittinghofer, A. & Goody, R. S. (1995) *Biochemistry* **34**, 12543–12552.
7. Moore, M. S. & Blobel, G. (1993) *Nature (London)* **365**, 661–663.

8. Melchior, F., Paschal, B., Evans, J. & Gerace, L. (1993) *J. Cell Biol.* **123**, 1649–1659.
9. Renault, L., Nassar, N., Vetter, I., Becker, J., Klebe, C., Roth, M. & Wittinghofer, A. (1998) *Nature (London)* **392**, 97–100.
10. Rosa, J. L. & Barbacid, M. (1997) *Oncogene* **15**, 1–6.
11. Gillespie, P. G., Prusti, R. K., Apel, E. D. & Beavo, J. A. (1989) *J. Biol. Chem.* **264**, 12187–12193.
12. Marzesco, A. M., Galli, T., Louvard, D. & Zahraoui, A. (1998) *J. Biol. Chem.* **273**, 22340–22345.
13. Yan, D., Swain, P. K., Breuer, D., Tucker, R. M., Wu, W., Fujita, R., Rehemtulla, A., Burke, D. & Swaroop, A. (1998) *J. Biol. Chem.* **273**, 19656–19663.
14. Ueffing, M., Lovric, J., Philipp, A., Mischak, H. & Kolch, W. (1997) *Oncogene* **15**, 2921–2927.
15. Picard, V., Ersdalbadju, E., Lu, A. Q. & Bock, S. C. (1994) *Nucleic Acids Res.* **22**, 2587–2591.
16. Vojtek, A. B., Hollenberg, S. M. & Cooper, J. A. (1993) *Cell* **74**, 205–214.
17. Schiestl, R. H. & Gietz, R. D. (1989) *Curr. Genet.* **16**, 339–346.
18. Bartel, P. L. & Fields, S. (1995) *Methods Enzymol.* **254**, 241–263.
19. Hafner, S., Adler, H. S., Mischak, H., Janosch, P., Heidecker, G., Wolfman, A., Pippig, S., Lohse, M., Ueffing, M. & Kolch, W. (1994) *Mol. Cell. Biol.* **14**, 6696–6703.
20. VanCott, T. C., Loomis, L. D., Redfield, R. R. & Birk, D. L. (1992) *J. Immunol. Methods* **146**, 163–176.
21. Malmberg, A. C., Michaelsson, A., Ohlin, M., Jansson, B. & Borrebaeck, C. A. (1992) *Scand. J. Immunol.* **35**, 643–650.
22. Kuhlmann, J., Macara, I. & Wittinghofer, A. (1997) *Biochemistry* **36**, 12027–12035.
23. Roepman, R., van Duijnhoven, G., Rosenberg, T., Pinckers, A. J., Bleeker-Wagemakers, L. M., Bergen, A. A., Post, J., Beck, A., Reinhardt, R., Ropers, H. H., *et al.* (1996) *Hum. Mol. Genet.* **5**, 1035–1041.
24. Andreasson, S., Ponjavic, V., Abrahamson, M., Ehinger, B., Wu, W., Fujita, R., Buraczynska, M. & Swaroop, A. (1997) *Am. J. Ophthalmol.* **124**, 95–102.
25. Jaitner, B. K., Becker, J., Linnemann, T., Herrmann, C., Wittinghofer, A. & Block, C. (1997) *J. Biol. Chem.* **272**, 29927–29933.
26. Lorenz, B., Migliaccio, C., Lichtner, P., Meyer, C., Strom, T. M., Durso, M., Becker, J., Ciccodicola, A. & Meitinger, T. (1998) *Eur. J. Hum. Genet.* **6**, 283–290.
27. Li, N., Florio, S. K., Pettenati, M. J., Rao, P. N., Beavo, J. A. & Baehr, W. (1998) *Genomics* **49**, 76–82.
28. Higashide, T., Murakami, A., McLaren, M. J. & Inana, G. (1996) *J. Biol. Chem.* **271**, 1797–1804.
29. Higashide, T., McLaren, M. J. & Inana, G. (1998) *Invest. Ophthalmol. Visual Sci.* **39**, 690–698.
30. Maduro, M. & Pilgrim, D. (1996) *Gene* **183**, 77–85.
31. Bowes, C., Li, T., Danciger, M., Baxter, L. C., Applebury, M. L. & Farber, D. B. (1990) *Nature (London)* **347**, 677–680.
32. Altherr, M. R., Wasmuth, J. J., Seldin, M. F., Nadeau, J. H., Baehr, W. & Pittler, S. J. (1992) *Genomics* **12**, 750–754.
33. McLaughlin, M. E., Sandberg, M. A., Berson, E. L. & Dryja, T. P. (1993) *Nat. Genet.* **4**, 130–134.
34. McLaughlin, M. E., Ehrhart, T. L., Berson, E. L. & Dryja, T. P. (1995) *Proc. Natl. Acad. Sci. USA* **92**, 3249–3253.
35. Gal, A., Orth, U., Baehr, W., Schwinger, E. & Rosenberg, T. (1994) *Nat. Genet.* **7**, 64–68.
36. Florio, S. K., Prusti, R. K. & Beavo, J. A. (1996) *J. Biol. Chem.* **271**, 24036–24047.
37. Qin, N., Pittler, S. J. & Baehr, W. (1992) *J. Biol. Chem.* **267**, 8458–8463.
38. Anant, J. S., Ong, O. C., Xie, H. Y., Clarke, S., O'Brien, P. J. & Fung, B. K. (1992) *J. Biol. Chem.* **267**, 687–690.
39. Seabra, M. C., Ho, Y. K. & Anant, J. S. (1995) *J. Biol. Chem.* **270**, 24420–24427.
40. Seabra, M. C., Brown, M. S. & Goldstein, J. L. (1993) *Science* **259**, 377–381.
41. Ullrich, O., Horiuchi, H., Bucci, C. & Zerial, M. (1994) *Nature (London)* **368**, 157–160.