

Eukaryotic-type elongator tRNA^{Met} of *Trypanosoma brucei* becomes formylated after import into mitochondria

Timothy H. P. Tan, Natacha Bochud-Allemann, Elke K. Horn, and André Schneider*

Department of Biology/Zoology, University of Fribourg, Chemin du Musée 10, CH-1700 Fribourg, Switzerland

Edited by Paul R. Schimmel, The Scripps Research Institute, La Jolla, CA, and approved November 27, 2001 (received for review October 2, 2001)

The mitochondrion of *Trypanosoma brucei* lacks tRNA genes. Its translation system therefore depends on the import of cytosolic, nucleus-encoded tRNAs. Thus, most trypanosomal tRNAs function in both the cytosol and the mitochondrion, and all are of the eukaryotic type. This is also the case for the elongator tRNA^{Met}, whereas the only other trypanosomal tRNA^{Met}, the eukaryotic initiator, is found exclusively in the cytosol. Unlike their cytosolic counterparts, organellar initiator tRNAs^{Met} carry a formylated methionine. This raises the question of how initiation of translation works in trypanosomal mitochondria, where only elongator tRNA^{Met} is found. Using *in organello* charging and formylation assays, we show that unexpectedly a fraction of elongator tRNA^{Met} becomes formylated after import into mitochondria. Furthermore, *in vitro* experiments with mitochondrial extracts demonstrate that only the trypanosomal elongator and not the initiator tRNA^{Met} is recognized by the formylation activity. Finally, RNA interference assays identify the gene encoding the trypanosomal formylase activity. Whereas the predicted protein is homologous to prokaryotic and mitochondrial methionyl-tRNA^{Met} formyltransferases, it has about twice the mass of any of these proteins.

mitochondrial translation | initiator tRNA^{Met} | formylation | mitochondrial tRNA import | methionyl-tRNA^{Met} formyltransferase

Initiation of protein synthesis occurs universally with the amino acid methionine in eukaryotes and *Archea* or its derivative formyl-methionine in *Bacteria* and organelles. All organisms have two classes of tRNAs^{Met}, an initiator tRNA^{Met-i}, which is used for initiation of protein synthesis, and an elongator tRNA^{Met-e}, which functions in the insertion of methionine into internal peptidic linkages (1, 2). Whereas elongator tRNAs^{Met-e} of all organisms look similar, there are two distinct groups of initiator tRNAs^{Met-i}. Bacterial and organellar initiator tRNAs^{Met-i} are only functional when carrying a formylated methionine. Addition of the formyl group to the methionine of the charged initiator tRNA^{Met-i} is catalyzed by methionyl-tRNA^{Met} formyltransferase (MTF), which is found in *Bacteria* and organelles but not in *Archea* or the eukaryotic cytosol. It recognizes specific features of the tRNA such as the CA mismatch at the top of the acceptor stem (position 1–72), which is conserved in bacterial initiator tRNAs^{Met-i}. Initiator tRNAs^{Met-i} of the eukaryotic cytosol and *Archea*, on the other hand, carry an A1·T72 base pair, which is not found in any other tRNA. Mitochondrial tRNAs^{Met} are less clearly defined. Often, only a single type of tRNA^{Met} is found, which is assumed to be used as an initiator in the formylated state and as an elongator when carrying an underivatized methionine (3). If only a single tRNA^{Met} is found in mitochondria, it most closely resembles an initiator type; however, frequently an A1·T72 base pair replaces the typical C1·A72 mismatch. Thus, many mitochondrial tRNAs^{Met} superficially resemble eukaryotic initiator tRNAs^{Met-i}.

Whereas in many eukaryotes all of the tRNAs necessary for organellar translation are encoded on the mitochondrial genome, there is a large variety of organisms where a variable number of apparently essential mitochondrial tRNA genes are

missing. It has been shown that the lack of these genes is generally compensated by import of the corresponding cytosolic tRNAs. In all cases known, imported tRNAs originate from nuclear genes encoding cytosolic, eukaryotic-type tRNAs involved in cytosolic translation (4). An extreme situation is found in the trypanosomatids, which have lost their entire set of mitochondrial tRNA genes and therefore must import all tRNAs necessary for organellar protein synthesis (5, 6). In these organisms, the bacterial-type translation system of mitochondria is faced with the problem that it has to function with imported, eukaryotic-type tRNAs only. This raises the question of how mitochondrial translation initiation, known to require a formylated bacterial-type initiator tRNA^{Met-i}, can function with imported eukaryotic-type tRNAs^{Met}. In this study, we have used the trypanosomatid *Trypanosoma brucei* to investigate this problem.

Materials and Methods

Cells. Procyclic *T. brucei*, stock 427, was grown at 27°C in SDM-79 medium supplemented with 5% FBS. Cells were harvested at late-log phase corresponding to 2.5 to 4.5 × 10⁷ cells/ml.

Isolation of Mitochondria. Mitochondria used for *in organello* aminoacylation and formylation assays were isolated under isotonic conditions as described (7). The final fraction of mitochondria was resuspended at high protein concentration (30–50 mg/ml) in SoTE (0.6 M sorbitol/20 mM Tris·HCl, pH 7.5/2 mM EDTA) containing 20 mg/ml fatty acid-free BSA and frozen in aliquots. Mitochondria purified with this method retain an intact outer membrane and are respiration competent (8).

In Organello Aminoacylation and Formylation Assays. All assays were done in 20 mM Tris·HCl, pH 7.2/15 mM KH₂PO₄/0.6 M sorbitol/20 mM MgSO₄/5 mg/ml fatty acid-free BSA. Aminoacylation reactions were performed in 50 μl containing 750 μg of isotonic purified mitochondria and 20–40 μCi (1 Ci = 37 GBq) of [³⁵S]methionine/[³⁵S]cysteine mixture (>1,000 Ci/mmol) (from Hartmann Analytic or from Amersham Pharmacia). The labeled [³⁵S]cysteine (ca. 25% of total) was competed out by the addition of 0.5 mM unlabeled cysteine. Intra-mitochondrial ATP production was induced by the addition 5 mM α-ketoglutarate/5 mM glycerol 3-phosphate/2 mM ADP (8). *In organello* formylation reactions were done as described for the aminoacylation assays, except that where applicable (see Fig.

This paper was submitted directly (Track II) to the PNAS office.

Abbreviations: MTF, methionyl-tRNA^{Met} formyltransferase; THF, tetrahydrofolate; RT, reverse transcriptase.

Data deposition: The sequence reported in this paper has been deposited in the GenBank database (accession no. AF443297).

See commentary on page 1110.

*To whom reprint requests should be addressed. E-mail: andre.schneider@unifr.ch.

The publication costs of this article were defrayed in part by page charge payment. This article must therefore be hereby marked "advertisement" in accordance with 18 U.S.C. §1734 solely to indicate this fact.

3A) 5 μ Ci of [14 C]formate (55 mCi/mmol) (Hartmann Analytic) was used and that the [35 S]methionine/[35 S]cysteine mixture was replaced by 1 mM unlabeled methionine. The reactions were incubated for 15 min at 30°C, and the mitochondria were reisolated by centrifugation (8,000 \times g, 5 min at 4°C). Finally, RNAs were isolated from the mitochondrial pellets by using the acid guanidinium method (10), and 35 S- or 14 C-labeled tRNAs^{Met} were analyzed on 8 M urea/10% polyacrylamide gels and visualized by fluorography. It was important to prevent deacylation of the labeled tRNAs^{Met} during electrophoresis by either running the gel under acidic condition (11) or by subjecting the sample to a deamination procedure (5) before electrophoresis. Alternatively to the gel electrophoresis, aminoacylation and formylation of tRNAs^{Met} were also analyzed by the TLC-based procedure described below.

In Vitro Formylation Assays. Preparation of RNA-free cytosolic and mitochondrial matrix fraction was done as described (12). Substrate tRNAs were prepared as follows. Total or mitochondrial RNA was isolated according to the acid guanidinium method (10) and separated on a preparative 8 M urea/10% polyacrylamide gel run at pH 8.0. The region of the gel containing the tRNAs was visualized by ethidium bromide staining and cut out. After an overnight elution, the tRNAs were ethanol-precipitated and quantified by A_{260} measurements.

In vitro charging and formylation assays were performed in 50 μ l with 30–60 μ g of RNA-free cytosolic or mitochondrial matrix fraction in 1 \times acylation buffer (50 mM Tris-HCl, pH 7.5/25 mM KCl/8 mM MgCl₂) containing 2 mM ATP/0.1 mM 10-formyltetrahydrofolate (THF)/1 mM cysteine/10 mM 2-mercaptoethanol/0.3% (wt/vol) CHAPS and the same amount of [35 S]methionine that was used for the *in organello* assays. The following amounts of substrate tRNAs were used: 7 μ g for isolated cytosolic tRNA, 3 μ g for isolated mitochondrial tRNAs, and 1.5 μ g each of gel-eluted cytosolic fraction containing either tRNA^{Met-c} or tRNA^{Met-i} only (see Fig. 4). After incubation for 15 min at 30°C, the tRNAs were reisolated by using the acid guanidinium procedure and analyzed as described for the *in organello* assays.

To distinguish methionylated from formylmethionylated tRNAs^{Met}, the following procedure was developed. Isolated 35 S-labeled tRNAs from an *in organello* or an *in vitro* assay were deacylated in 15 μ l of 1 M Tris-HCl, pH 9.2, for 1–2 h at 30°C. In a next step, the tRNAs were precipitated by the addition of 2.5 vol of cold ethanol, and the sample was pelleted at 16,000 \times g for 20 min at 4°C. The supernatant containing the released [35 S]methionine or formyl[35 S]methionine was dried down and resuspended in 15 μ l of water. Finally, 2 μ l of each reaction was spotted on a cellulose TLC plate, which was developed in a 13:3:1 mixture of diethylether, acetic acid, and water. Unlabeled methionine and formylmethionine (2 μ l each) dissolved in 1 M Tris-HCl, pH 9.2, were used as markers and visualized by UV. The fractionated labeled amino acids were detected by using a gas flow Geiger Müller counter (TLC-linear analyzer, Berthold, Nashua, NH) and displayed on the monitor of a multichannel analyzer (system BS 27/N, Berthold). The data shown in Figs. 3, 4, and 6 are the tracings reproduced from the pictures on the monitor. Exposure times varied from 30 min to 4 h. For all experiments, 10% of the reaction before and after the deacylation step was analyzed on an acidic 8 M urea/10% polyacrylamide gel. This served to confirm the identity of the labeled tRNAs^{Met} and the completeness of the deacylation as well as the integrity of the tRNA.

3'-End Splint Labeling. Quantitative 3'-end modification of distinct RNA species in a complex mixture of RNAs can be achieved with specific oligonucleotides and Sequenase 2.0 (United States Biochemical) by using the 3'-end splint-labeling protocol as

originally described by Hausner *et al.* (13). In this method, the oligonucleotide hybridizes to the 3' end of the RNA, where it leaves a 5' overhang that allows the enzyme to add the corresponding complementary dNTP to the 3' end of the selected RNA. Quantitative 3'-end modification of the elongator tRNA^{Met-c} by dCTP addition was done by using the oligonucleotide (GTGGTGCATCGGTGAGGCTCGAACTCA) and 100 μ M dCTP as described (14). The control sample was treated identically except that an oligonucleotide known to modify the tRNA^{Lys} was used (14). After 3'-end modification, both tRNA fractions were subjected to *in vitro* aminoacylations as described above.

RNA Interference Assay. A fragment corresponding to the 5' part of trypanosomal MTF (nucleotide 16–509 from the ATG) was amplified by using the 5' primer (CCGCTCGAGGTGTGGA-CATAGTG) and the 3' primer (GGCAAGCTTTTCGCCATAGACGTCG) having flanking *Xho*I and *Hind*III sites, respectively. The resulting 493-bp fragment was cloned into the corresponding restriction sites of the pZJM vector (15). The linearized vector was then transfected into the procyclic *T. brucei* strain 29-13, which expresses T7 RNA polymerase and the tetracycline repressor (16). Selection and induction with tetracycline were done as described (15). To estimate the MTF-mRNA quantities in cells grown in the presence and absence of the amplification, total RNA was isolated from an equal number of uninduced and induced cells and used for a reverse transcriptase (RT)-PCR analysis by using avian myeloblastosis virus reverse transcriptase (Promega) and the same set of primers as above. Previous experiments have demonstrated that this method yields semiquantitative results if analyzed in the linear range of the amplification. Finally, *in organello* formylation activity was compared in both cell lines. Washed cells (10⁸ cells each) of cultures grown in the presence and the absence of tetracycline were resuspended in 0.5 ml of SoTE; 0.5 ml of SoTE containing 0.025% (wt/vol) of digitonin was added, and the sample was mixed by pipetting and incubated on ice for 5 min. After centrifugation (8,000 \times g for 5 min at 4°C), the supernatant was discarded, and the resulting mitochondrial pellet was resuspended in 250 μ l of the buffer used for the *in organello* formylation assays. Control experiments have shown that the mitochondrial fraction obtained by digitonin treatment is capable of respiratory substrate-driven ATP production. The labeling reaction and the analysis of the labeled products was done as described for the *in organello* assays.

Miscellaneous. Northern blots were done as described (17). The indicated oligonucleotides directed against the T-stem loop region were used for the specific detection of tRNA^{Met-i} (GT-TGGTTTCGATCCAACG) and tRNA^{Met-c} (GTGAGGCTCGAACTCAG).

Results

tRNAs^{Met} in *T. brucei*. Analysis of the nearly complete genomic sequence of *T. brucei* (kindly provided by The Institute for Genomic Research and the Sanger Centre) has identified genes for two distinct but homologous tRNAs^{Met} whose predicted secondary structures are shown in Fig. 1A. One resembles a standard elongator tRNA^{Met-c}; the other one has an A1-U72 base pair and three consecutive G-C base pairs at the end of the anticodon stem and therefore corresponds to the cytosolic initiator tRNA^{Met-i} (1). Northern analysis by using oligonucleotides specifically hybridizing to either of the two tRNAs^{Met} is depicted in Fig. 1B. The left panel shows that a band is detected in total cellular RNA, which in size corresponds closely to the *in vitro* transcript of the elongator tRNA^{Met-c}. The band was detected in both RNA isolated from whole cells as well as from the mitochondrial fraction, indicating that the tRNA is in part

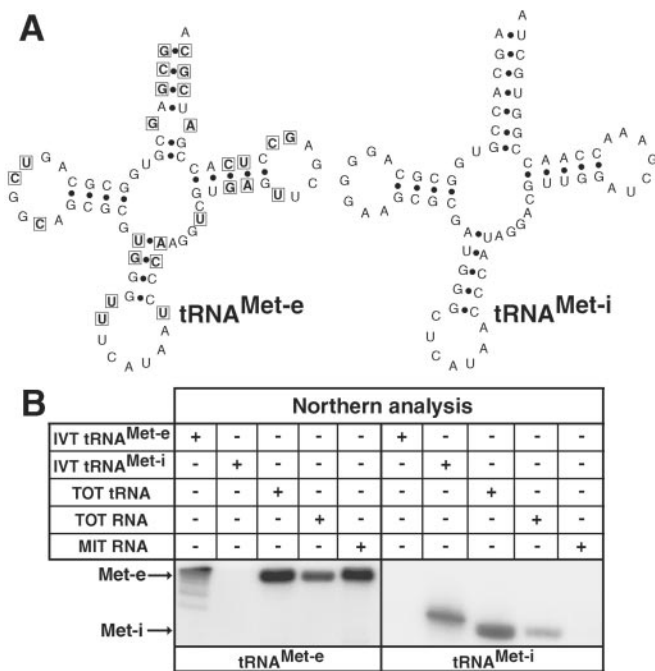


Fig. 1. Elongator and initiator tRNAs^{Met} in *T. brucei*. (A) Predicted secondary structures of the homologous elongator and cytosolic initiator tRNAs^{Met}. Nucleotides that are different between the two molecules are boxed in the elongator tRNA^{Met}. (B) Duplicate Northern blots were analyzed with oligonucleotide probes specific for elongator tRNA^{Met-e} (Left) and initiator tRNA^{Met-i} (Right). The following RNA fractions were tested: IVT tRNA^{Met-e/Met-i} (5 ng each), *in vitro* transcripts of the corresponding tRNAs^{Met}; TOT RNA, RNA isolated from total cell (3 μg each); TOT tRNA, gel-eluted tRNAs from a total RNA fraction (2.1 μg each); and MIT RNA, RNA isolated from mitochondria (3 μg each).

imported into mitochondria. The right panel shows the analogous experiment for the initiator tRNA^{Met-i}, which is found in the cytosol only. In this case, the *in vitro* transcript migrates a bit slower than the molecules detected in isolated RNA fractions, which is due to the fact that it is one nucleotide longer than the expected mature tRNA.

Are there other as yet undetected tRNAs^{Met} in *T. brucei*? This is clearly possible, as in a recent genome-wide analysis it was concluded that only 80% of all trypanosomal tRNA genes have been identified (R. Pach and A.S., unpublished results). To detect all existing tRNAs^{Met}, we performed aminoacylation assays by using RNA-free cytosol as source of enzyme and total cellular tRNAs as substrate. Fig. 2A (Upper) shows that two charged tRNA^{Met} species are present in the cell. The slower migrating one corresponds in size to the charged *in vitro* transcript of the elongator tRNA^{Met-e}, whereas the other one comigrates with the corresponding signal for initiator tRNA^{Met-i} (data not shown). Separate experiments confirmed that the signals of both charged tRNA species coincide with the signals obtained on Northern blots (data not shown). To exclude that a second, as yet unidentified tRNA^{Met}, which comigrates with the known elongator tRNA^{Met}, is contributing to the observed aminoacylation signal, further charging assays were performed. In these assays, we used a total tRNA fraction in which the 3'-end of the elongator tRNA^{Met-e} was quantitatively modified by 3'-end splint labeling (13, 14, 18) as a substrate (see *Material and Methods*). Fig. 2A (Lower) shows that this treatment completely abolishes aminoacylation of the elongator tRNA^{Met-e}, whereas charging of the homologous initiator tRNA^{Met-i} is not affected. These results therefore strongly suggest that [³⁵S]methionine-labeled band corresponding to the elongator tRNA^{Met-e} is caused by this

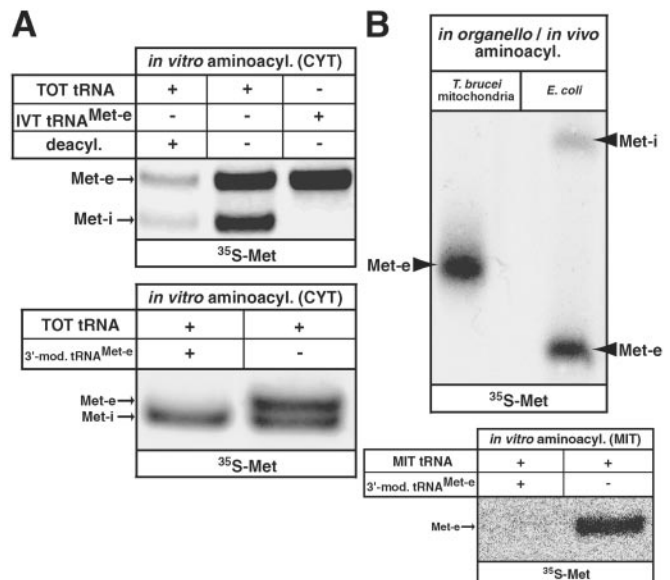


Fig. 2. Aminoacylation assays by using [³⁵S]methionine. (A Upper) *In vitro* aminoacylation (aminoacyl.) of gel-eluted total tRNA (TOT tRNA) and *in vitro* transcribed elongator tRNA^{Met} (IVT tRNA^{Met-e}) with [³⁵S]methionine (³⁵S-Met) by using RNA-free cytosolic extract (CYT). Incubation at pH 9.2 leads to deacylation (deacyl.) of the charged tRNAs^{Met}. The positions of the corresponding signals obtained on duplicate Northern blots are indicated by arrows. (Lower) Aminoacylation assays using cytosolic extract and total tRNA in which the 3'-end of the elongator tRNA^{Met-e} was modified by splint labeling (3'-mod., left lane) or mock-treated (right lane). All samples were subjected to a deamination reaction before they were separated on an 8 M urea/10% polyacrylamide gel at pH 8.0. (B Upper) *In organello* and *in vivo* aminoacylation assay of isolated *T. brucei* mitochondria or *E. coli* cells, respectively, using [³⁵S]methionine. Samples were analyzed on a high resolution 8 M urea/10% polyacrylamide gel run at pH 5.0 (11) and visualized by fluorography. The positions of mitochondrial elongator tRNA^{Met-e} as obtained on a duplicate Northern blot and of eubacterial initiator and elongator tRNAs^{Met} are indicated. (Lower) Aminoacylation assays using matrix extract (MIT) and mitochondrial tRNA (MIT tRNA) in which the 3'-end of the elongator tRNA^{Met-e} was modified by splint labeling (3'-mod., left lane) or mock-treated (right lane). All samples were subjected to a deamination reaction before they were separated on an 8 M urea/10% polyacrylamide gel at pH 8.0.

tRNA only. Should another as yet unknown tRNA^{Met} contribute to the observed signal, it would not only need to comigrate with the elongator tRNA^{Met-e} (even on high resolution gels) but also to share the same 3' sequence. Thus, the only two bands detected by aminoacylation (Fig. 2A) can be assigned to the two known trypanosomal tRNAs^{Met}, indicating that no other tRNAs^{Met} exist in *T. brucei*.

To look at the situation in mitochondria, we performed *in organello* aminoacylation experiments that are expected to label all possible mitochondrial tRNAs^{Met}. Isolated mitochondria were incubated with respiratory substrates, ADP and [³⁵S]methionine. The ATP needed by the mitochondrial methionyl-tRNA synthetase is provided by respiratory substrate-driven oxidative phosphorylation (8). Fig. 2B shows that only a single band comigrating with *in vitro* transcribed elongator tRNA^{Met-e} is detected. On the right lane, an *in vivo* charging experiment with *Escherichia coli* is shown to demonstrate the resolving power of the gel system, which readily separates bacterial initiator and elongator tRNAs^{Met} that are identical in size. As with total tRNA, modification of the mitochondrial elongator tRNA^{Met-e} by 3'-end splint labeling results in a complete loss of the observed aminoacylation signal (Fig. 2B Lower). Thus, the imported elongator tRNA^{Met-e} seems to be the only tRNA^{Met} that is present in mitochondria.

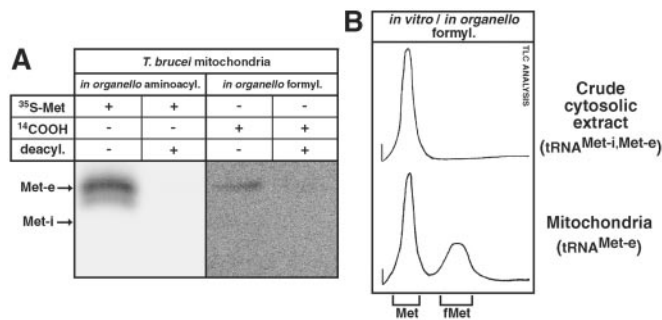


Fig. 3. Formylation activity in mitochondria of *T. brucei*. (A) *In organello* aminoacylation assays (Left) and formylation assays (Right) are shown. Isolated mitochondria were incubated with [³⁵S]methionine (³⁵S-Met) or [¹⁴C]-formate (¹⁴COOH) and subjected to deacylation (deacyl.) as indicated. The deamidated samples were separated on a high resolution 8 M urea/10% polyacrylamide gel at pH 8.0 and visualized by fluorography. The double band (Left) is an artifact of the deamidation procedure (5). The positions of tRNA^{Met-e} and tRNA^{Met-i} as determined by Northern analyses of total RNA are indicated. (B) Tracings of the [³⁵S]methionine signals from TLC analyses of formylation reactions (see text for details). (Upper) *In vitro* formylation assay performed with crude cytosolic extract and [³⁵S]methionine. (Lower) ³⁵S signals obtained from an *in organello* formylation assay (Mitochondria). The tRNAs^{Met} known to be present in the two fractions are indicated in parentheses. The positions of unlabeled methionine (Met) and formylmethionine (fMet) separated under the same conditions in a parallel TLC lane are indicated. The origin is marked by the short vertical line on the left.

Formylation Activity in *T. brucei* Mitochondria. No initiator tRNA^{Met} exists in *T. brucei* mitochondria, which raises the question of which tRNA is used for translation initiation and whether it becomes formylated. To detect formylated trypanosomal methionyl-tRNA^{Met}, we used two approaches. First, analogous to the aminoacylation assay described in the previous paragraph, we performed *in organello* formylation assays. The formyl group in formylated initiator tRNA^{Met-i} is derived from 10-formyl-THF. The compound is synthesized by formyl-THF synthase, which can use formate as a formyl donor. Isolated mitochondria were therefore incubated with respiratory substrates, ADP and [¹⁴C]formate, and processed as described in *Materials and Methods*. Fig. 3A (Right) shows a [¹⁴C]formate-labeled band that, in size, corresponds to the imported elongator tRNA^{Met-e} visualized (Left) by *in organello* aminoacylation with [³⁵S]methionine. In both experiments, the radioactive label is sensitive to deacylation at pH 9.2, indicating that the label is on the amino acid. Thus, it is concluded that formylation of a tRNA species that, in size, corresponds to the elongator tRNA^{Met-e} occurs in *T. brucei* mitochondria. In the second approach, we established a method that allows the direct detection of formyl-methionine. Aminoacylation assays by using [³⁵S]methionine were performed either in energized mitochondria or *in vitro* in the presence of ATP and the formyl donor 10-formyl-THF. After incubation, [³⁵S]methionine-labeled RNA was isolated and incubated at pH 9.2. This condition results in the release of the charged amino acid, which is then analyzed by TLC optimized to separate methionine from its formylated derivative. Using this protocol, it was shown that from crude cytosolic extract containing RNA and proteins, the only ³⁵S-labeled molecule released during the deacylation reaction was methionine (Fig. 3B Upper). In an *in organello* formylation assay, however, not only [³⁵S]methionine but also formyl-[³⁵S]methionine is detected (Fig. 3B Lower). The obtained results are in full agreement with the formate-labeling experiment discussed before (Fig. 3A) and show that a significant fraction (40–50%, depending on the experiment) of the elongator methionyl-tRNA^{Met-e} is formylated in mitochondria of *T. brucei*.

To look at the substrate specificity of the activity in some more

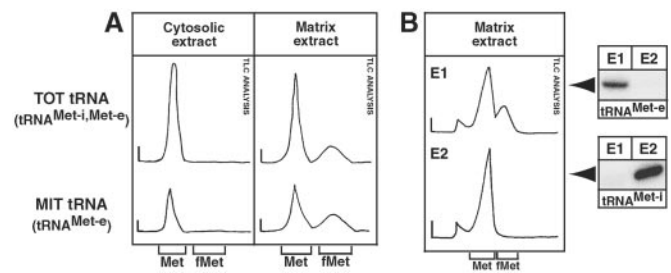


Fig. 4. Mitochondrial formylation activity selectively recognizes elongator tRNA^{Met-e}. Tracings of the ³⁵S signals from TLC analyses of *in vitro* formylation reactions using RNA-free cytosolic and RNA-free mitochondrial matrix extract are shown. (A) Gel-eluted total tRNAs (TOT tRNA, Upper) and gel-eluted mitochondrial tRNAs (MIT tRNA, Lower) were used as substrates in the experiments. (B) Gel-purified tRNA^{Met-e} (E1) or tRNA^{Met-i} (E2) originating from total cellular RNA were tested. The low intensity signal migrating slower than methionine was specific for the isotope mixture from Hartmann Analytic and was not found if the Amersham Pharmacia product was used. It coincides with the position of a cysteine marker. The positions of unlabeled methionine (Met) and formyl-methionine (fMet) are indicated as in Fig. 3. The purity of the eluted tRNA fractions, regarding the initiator and elongator tRNAs^{Met}, was tested by the Northern blots shown (Right), which were probed with the same oligonucleotides that were used in Fig. 1.

detail, we performed further types of *in vitro* formylation assays. As a source of enzyme we used RNA-free cytosolic and mitochondrial matrix fractions (see *Materials and Methods*). These fractions were incubated with ATP, [³⁵S]methionine, and 10-formyl-THF by using both crude total tRNA or isolated mitochondrial tRNAs as substrates. Fig. 4A Left shows that cytosolic extract is able to charge both the cytosolic as well as the mitochondrial tRNAs^{Met} but is devoid of formylation activity. The mitochondrial matrix, on the other hand, shows both methionyl-tRNA synthetase as well as formylation activity, as evidenced by the two peaks that are detected by TLC (Fig. 4A Right). Interestingly, the mitochondrial activity not only formylates isolated mitochondrial tRNAs but, to a lesser extent, also cytosolic tRNAs. The cytosolic tRNA fraction contains both the cytosol-specific initiator tRNA^{Met-i} as well as the nonimported fraction (ca. 94% of total) of elongator tRNA^{Met-e} (R. Pach and A.S., unpublished results). To see which of the two molecules in the cytosolic fraction is formylated in the *in vitro* reaction, the two tRNAs^{Met} were separated from each other and eluted from a denaturing polyacrylamide gel. Fig. 4B Left shows that elongator tRNA^{Met-e} from the cytosolic fraction is formylated by the matrix-localized activity with similar efficiency to the elongator tRNA^{Met-e} of mitochondrial origin. The formylation activity therefore does not discriminate between cytosolic and mitochondrial isotype of elongator tRNA^{Met-e}. Indeed, extensive RT-PCR analysis suggests that elongator tRNAs^{Met-e} isolated from mitochondria and from the cytosol have identical nucleotide sequences (not shown). The cytosol-specific initiator tRNA^{Met-i}, however, cannot be formylated. This is surprising, as the eukaryotic-type initiator tRNA^{Met-i} more closely resembles the mitochondrial initiator tRNA^{Met-i} of other organisms than does the trypanosomal elongator tRNA^{Met-e}. *In vitro* formylation assays were also performed by using *in vitro* transcribed elongator tRNA^{Met-e} as substrates. Whereas the synthetic tRNA^{Met-e} could be charged efficiently (Fig. 2A, right lane), the *in vitro* transcript could not be formylated, indicating an essential role for a nucleotide or base modification for the recognition by the trypanosomal MTF (data not shown).

The Gene for Mitochondrial MTF of *T. brucei*. To identify the gene encoding the formylation activity, we searched the *T. brucei* genomic databases (kindly provided by The Institute of Genomic

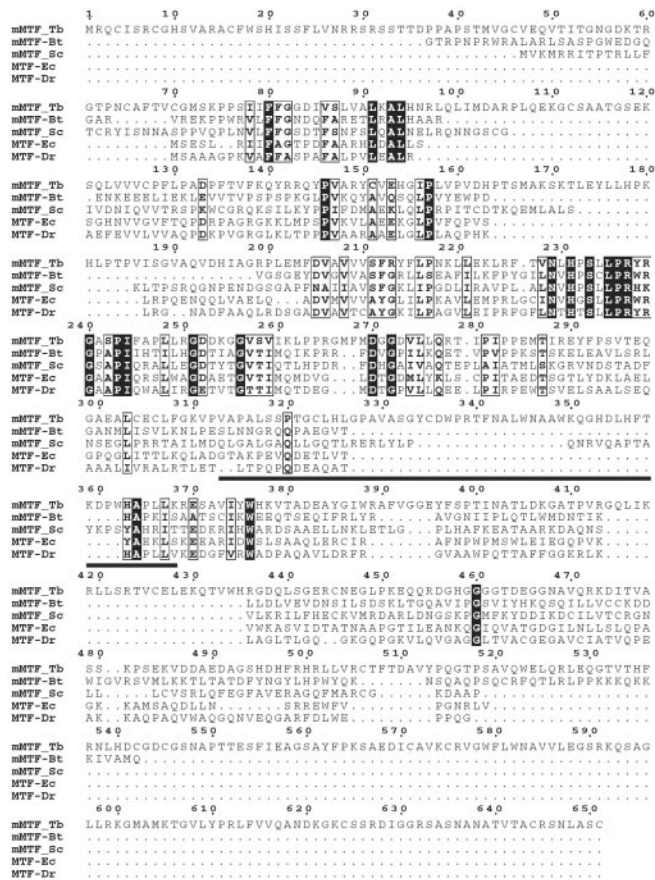


Fig. 5. Multiple sequence alignment of mitochondrial and bacterial MTF polypeptides. The sequences of three mitochondrial MTFs (mMTF) from *T. brucei* (Tb), *Bos taurus* (Bt), and *Saccharomyces cerevisiae* (Sc) and two bacterial MTFs from *E. coli* (Ec) and *D. radiodurans* (Dr) were aligned by using the CLUSTAL W program with default parameters. Strictly conserved residues are shown in black boxes. Conservative replacements are boxed. The regions corresponding to the linker region (position 313–368) as defined in *E. coli* are underlined.

Research and the Sanger Centre) with the default BLAST algorithm by using bacterial and mitochondrial MTF amino acid sequences as templates. The obtained genomic fragments allowed us to assemble a contig corresponding to a complete ORF. Expression of this ORF was confirmed by amplification of the corresponding cDNA by using an oligo(dT) primer and a gene-specific primer hybridizing to the 5'-untranslated region of the mRNA. Furthermore, analysis of the cDNA showed that its sequence is identical to the genomic DNA. An alignment of the predicted protein sequence of this ORF with two mitochondrial (cattle, yeast) and two bacterial MTFs (*Deinococcus radiodurans*, *E. coli*) is shown in Fig. 5. If the ORF of the trypanosomal gene is compared with the complete nonredundant database, the only homologous proteins detected are bacterial and mitochondrial MTFs. The amino terminus of the putative trypanosomal MTF is predicted to have a mitochondrial targeting sequence when analyzed with the iPSORT or MITOPROT programs. Interestingly, however, the predicted trypanosomal protein is approximately twice the size of all other MTFs.

Recently, it was shown that the phenomenon of RNA interference does occur in *T. brucei* and can be used to inhibit expression of specific genes (15, 19, 20). We therefore used this technique to test whether the identified ORF indeed encodes the trypanosomal MTF. To do so, we established a stable cell line expressing sense and antisense strands of the 5'-segment of the

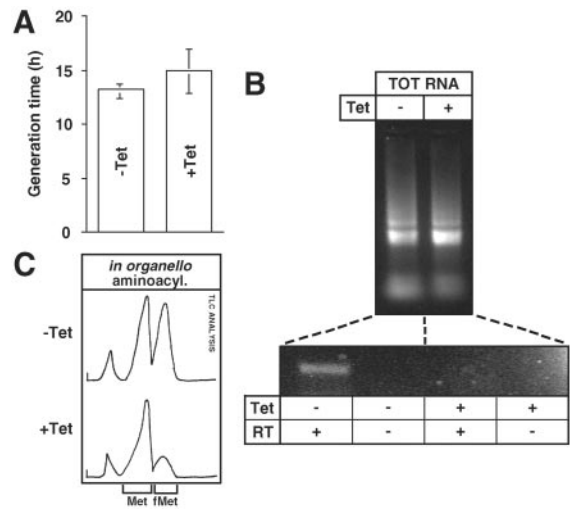


Fig. 6. Depletion of trypanosomal MTF by tetracycline-inducible RNA interference. (A) Mean values of the generation times for cells grown in the absence (–Tet) and the presence (+Tet) of tetracycline over an observed growth period of 14 days. (B Upper) Ethidium bromide-stained agarose gel of 3 µg each of total RNA (TOT RNA) isolated from uninduced (–) and induced (+) cells. (Lower) RT-PCR analyses of RNA from both cell lines using primers specific for the MTF mRNA (see *Materials and Methods*). Samples without RT serve as controls to show that MTF mRNA was specifically amplified. (C) TLC analyses of *in organello* formylation reactions by using digitonin-purified mitochondria from cells grown in the absence (ratio of the two peaks, 50:50) and the presence of tetracycline (ratio of the two peaks 78:22). For explanation of the additional slow migrating peak, see Fig. 4.

putative MTF gene under the control of two opposing tetracycline-inducible T7 RNA polymerase promoters (16). The RT-PCR experiments in Fig. 6B show the mRNA level of the trypanosomal MTF homologue drops below detectable levels after addition of the antibiotic. Equal numbers of cells grown in the presence or the absence of tetracycline were subjected to digitonin treatment to obtain a crude mitochondrial fraction (see *Materials and Methods*). Both organellar fractions were then used for *in organello* formylation assays identical to the ones described before (Fig. 3B), and the formylation state of the imported elongator tRNA^{Met-e} was analyzed by TLC (Fig. 6C). The experiment showed that methionyl-tRNA synthetase activity was comparable in both samples, but the formylation activity was greatly reduced in mitochondria from the cells grown in the presence of tetracycline. The formylated fraction of the elongator tRNA^{Met-e} (ca. 50%) in the cells grown in the absence of tetracycline was larger than in the experiments shown in Fig. 3B (ca. 40%), which could be due to the fact that different mitochondrial isolation procedures and cell lines were used in the two experiments. The cells with reduced formylation activity did not show a growth phenotype (Fig. 6A), which might be because there is still enough of the enzyme left to support normal growth. Thus, we conclude that the characterized ORF indeed encodes the trypanosomal MTF and that it is this enzyme that is responsible for the formylation of the imported elongator methionyl-tRNA^{Met-e} in *T. brucei*.

Discussion

As expected for a eukaryote, two distinct tRNAs^{Met} are found in the cytosol of *T. brucei*. One shows all of the properties of a eukaryotic initiator tRNA^{Met}, whereas the other one is an elongator tRNA^{Met}. However, unlike in other eukaryotes, there are no mitochondrial tRNA genes in *T. brucei*. The two nucleus-encoded tRNAs^{Met} therefore have to be sufficient for two translation systems, one in the cytosol and one in mitochondria.

Moreover, only the elongator tRNA^{Met-e} is imported into mitochondria, indicating that initiation and elongation of organellar translation must use a single tRNA^{Met}. This is not unusual, as many mitochondria have only a single tRNA^{Met}, which, however, shows at least some structural features of typical initiator tRNAs^{Met} (3). In *T. brucei*, the situation is very different because the imported tRNA^{Met} is apparently identical to the one that is used in cytosolic elongation. A hallmark of bacterial-type translation is that it uses formylated tRNA^{Met-i}. Interestingly, formylation of tRNA^{Met} still occurs in *T. brucei* mitochondria, even though an initiator-type tRNA^{Met} is absent. *T. brucei* therefore has a MTF that naturally recognizes elongator tRNA^{Met-e}. Thus, the substrate specificity of the trypanosomal MTF is diametrically opposed to bacterial or mitochondrial MTFs, which *in vivo* only formylate initiator and not elongator tRNAs^{Met}. The bovine mitochondrial MTF, which is the only mitochondrial MTF characterized so far (21), has a relaxed substrate specificity when compared with the bacterial enzyme, especially concerning the acceptor stem region of the substrate tRNA^{Met} (3). The trypanosomal elongator tRNA^{Met-e}, however, is devoid of all of the known structural features that are recognized by the mitochondrial MTF in the bovine system. Neither the first three acceptor stem base pairs of the bovine substrate nor the purine-11-pyrimidine-24 base pairs conserved in most initiator tRNAs^{Met} are found in trypanosomal tRNA^{Met-e}. In agreement with this, it was shown that the bovine MTF has only residual activity (0.2% when compared with the natural substrate) when tested with elongator tRNA^{Met} of *E. coli* (3).

The features of the trypanosomal elongator tRNA^{Met-e} that are recognized by the mitochondrial MTF are also present in the cytosolic fraction of the elongator tRNA^{Met-e}. A mitochondrial tRNA-editing event as prerequisite for formylation can therefore be excluded. Furthermore, *in vitro* experiments have shown that the enzyme can discriminate between the elongator tRNA^{Met-e} and the homologous cytosol-specific initiator tRNA^{Met-i}. *In vitro* transcribed elongator tRNA^{Met-e}, on the other hand, can be aminoacylated but not formylated when treated with mitochondrial extract. This suggests that a nucleotide or base modification is required as a recognition element for the trypanosomal MTF.

Mining the genome database and RNA interference assay allowed us to identify the gene responsible for the mitochondrial MTF activity in *T. brucei*. An alignment of three mitochondrial and two bacterial MTFs is shown in Fig. 5. The general structure

of MTFs consisting of two domains that are separated by a linker region seems to be retained in trypanosomes (22, 23). Interestingly, the linker region (at position 313–368) is longer than in any of the other enzymes. Most strikingly, however, is the fact that the protein is approximately twice the size of any other MTFs. The larger size of the trypanosomal protein is mainly because of unique amino-terminal (*ca.* 40 aa) and carboxyl-terminal (*ca.* 110 aa) extensions as well as to four internal insertions (13–22 aa). As for the bovine mitochondrial MTF (3), no obvious sequence element corresponding to the previously described 16-aa insertion sequence in the amino-terminal domain of the *E. coli* enzyme (22) is found in the trypanosomal enzyme. This element is responsible for interaction with the acceptor stem of the tRNA^{Met-i} (24); its absence might therefore be explained by the fact that the trypanosomal enzyme must recognize the acceptor stem of an elongator-type tRNA^{Met-e}.

In summary, we have shown that in *T. brucei*, a single gene product, the nucleus-encoded elongator tRNA^{Met-e}, has three distinct functions in two cellular compartments. It is required for translation elongation in the cytosol and for both the initiation and elongation step in mitochondrial translation. A fraction of the imported elongator methionyl-tRNA^{Met-e} becomes formylated in mitochondria. This formylation is carried out by an unusual MTF, which compared with the corresponding enzymes in other cells, has an inversed specificity concerning the tRNA substrate and selectively recognizes elongator tRNA^{Met-e}.

Besides the unusual MTF described in this study, there are other examples for adaptations of the trypanosomatid mitochondrial translation system to eukaryotic-type tRNAs. In *Leishmania* mitochondria, a C to U RNA-editing event in the anticodon of the imported tRNA^{Trp}(CCA) allows the decoding of UGG and UGA codons. The unedited tRNA^{Trp}(CCA) in the cytosol, however, as required reads the standard UGG tryptophan codon only (25). Finally, whereas organelles are known to be devoid of glutamyl-tRNA synthetases, as their tRNAs are charged in a two-step process requiring a tRNA-dependent transamidase (9), such enzymes exist in trypanosomatid mitochondria (12). Thus, exploring the limits of adaptation of a bacterial-type translation system to eukaryotic components may help to reveal fundamental requirements of translation.

We thank Drs. P. Englund and G. Cross for providing us with the pZJM vector and the *T. brucei* 29-13 strain, respectively. This study was supported by Swiss National Foundation Grants 31-056825.99 and 4037-55154 and by a fellowship of the Prof. Dr. Max Clœtta Foundation.

- RajBhandary, U. L. (1994) *J. Bacteriol.* **176**, 547–552.
- Blanquet, S., Mechulam, Y. & Schmitt, E. (2000) *Curr. Opin. Struct. Biol.* **10**, 95–101.
- Takeuchi, N., Vial, L., Panvert, M., Schmitt, E., Watanabe, K., Mechulam, Y. & Blanquet, S. (2001) *J. Biol. Chem.* **276**, 20064–20068.
- Schneider, A. & Marechal-Drouard, L. (2000) *Trends Cell Biol.* **10**, 509–513.
- Hancock, K. & Hajduk, S. L. (1990) *J. Biol. Chem.* **265**, 19208–19215.
- Simpson, A. M., Suyama, Y., Dewes, H., Campbell, D. A. & Simpson, L. (1989) *Nucleic Acids Res.* **17**, 5427–5445.
- Hauser, R., Pypaert, M., Häusler, T., Horn, E. K. & Schneider, A. (1996) *J. Cell Sci.* **109**, 517–523.
- Allemann, N. & Schneider, A. (2000) *Mol. Biochem. Parasitol.* **111**, 87–94.
- Schön, A., Kannangara, C. G., Gough, S. & Söll, D. (1988) *Nature (London)* **331**, 187–190.
- Chomczyński, P. & Sacchi, N. (1987) *Anal. Biochem.* **162**, 156–159.
- Varshney, U., Lee, C.-P. & RajBhandary, U. L. (1991) *J. Biol. Chem.* **266**, 24712–24718.
- Nabholz, C. E., Hauser, R. & Schneider, A. (1997) *Proc. Natl. Acad. Sci. USA* **94**, 7903–7908.
- Hausner, T. P., Giglio, L. M. & Weiner, A. M. (1990) *Genes Dev.* **4**, 2146–2156.
- Schneider, A., McNally, K. P. & Agabian, N. (1994) *Nucleic Acids Res.* **22**, 3699–3705.
- Wang, Z., Morris, J. C., Drew, M. E. & Englund, P. T. (2000) *J. Biol. Chem.* **275**, 40174–40179.
- Wirtz, E., Leal, S., Ochatt, C. & Cross, G. A. (1999) *Mol. Biochem. Parasitol.* **99**, 89–101.
- Hauser, R. & Schneider, A. (1995) *EMBO J.* **14**, 4212–4220.
- Huang, Z. & Szostak, J. W. (1996) *Nucleic Acids Res.* **24**, 4360–4361.
- Ngo, I., Tschudi, C., Gull, K. & Ullu, E. (1998) *Proc. Natl. Acad. Sci. USA* **95**, 14687–14692.
- Shi, H., Djikeng, A., Mark, T., Wirtz, E., Tschudi, C. & Ullu, E. (2000) *RNA* **6**, 1069–1076.
- Takeuchi, N., Kawakami, M., Omori, A., Ueda, T., Spremulli, L. L. & Watanabe, K. (1998) *J. Biol. Chem.* **273**, 15085–15090.
- Schmitt, E., Blanquet, S. & Mechulam, Y. (1996) *EMBO J.* **15**, 4749–4758.
- Schmitt, E., Panvert, M. & Blanquet, S. (1998) *EMBO J.* **17**, 6819–6826.
- Ramesh, V., Gite, S. & RajBhandary, U. L. (1998) *Biochemistry* **37**, 15925–15932.
- Alfonzo, J. D., Blanc, V., Estevez, A. M., Rubio, M. A. T. & Simpson, L. (1999) *EMBO J.* **18**, 7056–7062.