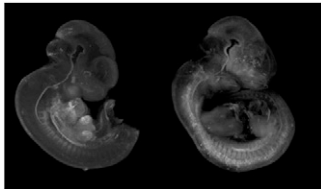


# Supporting Information

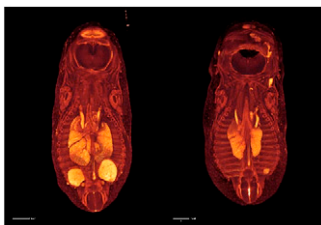
Anderson et al. 10.1073/pnas.1019761108

Supporting Information Corrected February 17, 2011



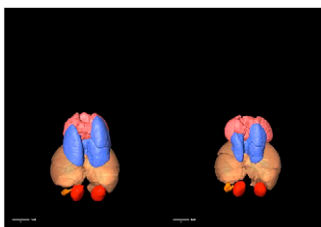
**Movie S1.** 3D imaging by optical projection tomography (OPT) shows CNS hemorrhage in E12.5 *Gpr124<sup>Lz/Lz</sup>* (KO) embryos (OPT maximum-intensity projection rotation).

[Movie S1](#)



**Movie S2.** Virtual sectioning reveals phenotypic defects in E15.5 *Gpr124<sup>Lz/Lz</sup>* (KO) embryos (volume-rendering cut-away).

[Movie S2](#)



**Movie S3.** 3D micro-CT images illustrate hypoplasia of lungs in E15.5 *Gpr124<sup>Lz/Lz</sup>* (KO) embryos (organ segmentation rotation).

[Movie S3](#)

## Other Supporting Information Files

[SI Appendix \(PDF\)](#)