

Supporting Information

Guha et al. 10.1073/pnas.1524860113

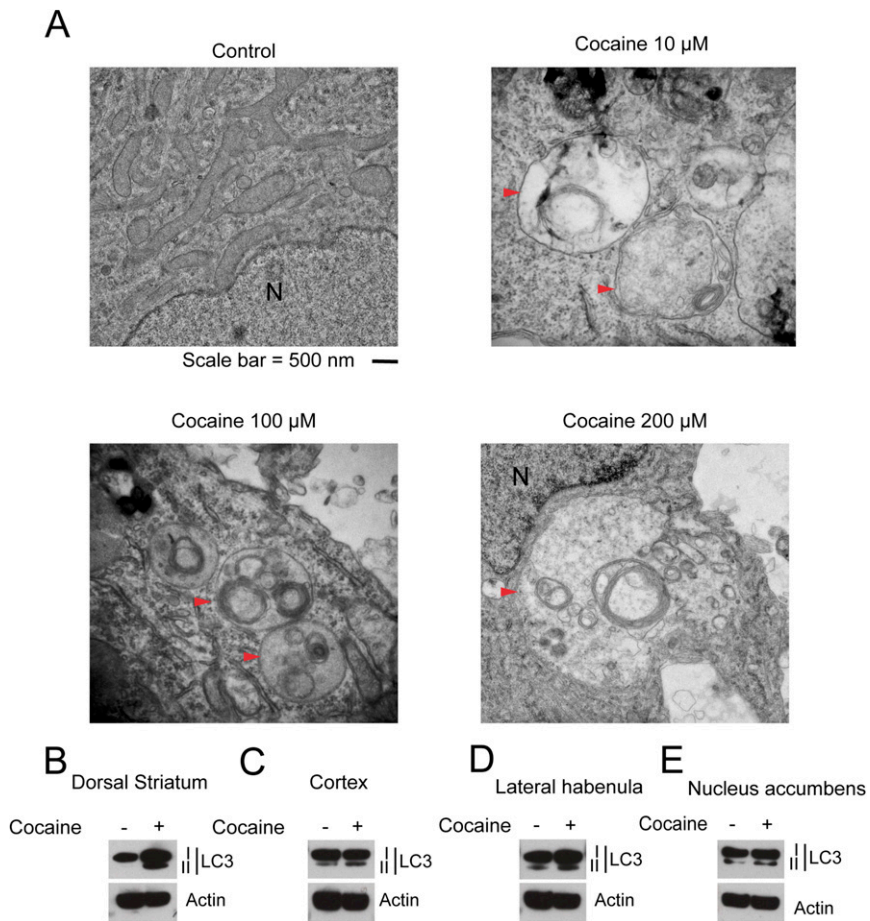


Fig. S1. (A) TEM of activation of autophagy in cortical neurons with different concentrations of cocaine. Arrowhead denotes autophagic vacuoles; N denotes nucleus. (Scale bar: 500 nm.) (B–D) Cocaine induces autophagy in vivo; mice were injected with vehicle or 20 mg/kg cocaine (intraperitoneal) for 3 h followed by Western blot for LC3-II. (B) Immunoblot assessment of LC3-II in dorsal striatum. (C) Immunoblot assessment of LC3-II in cortex. (D) Immunoblot assessment of LC3-II in lateral habenula. (E) Immunoblot assessment of LC3-II in nucleus accumbens. Each immunoblot is representative of three experiments.

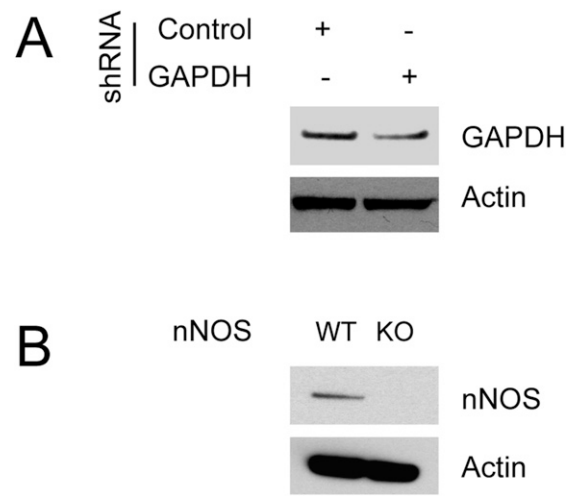


Fig. S2. (A) Immunoblot assessment of the knock-down efficiency of GAPDH shRNA. (B) Validation of nNOS KO in cortical cultures. Immunoblot is representative of three experiments.

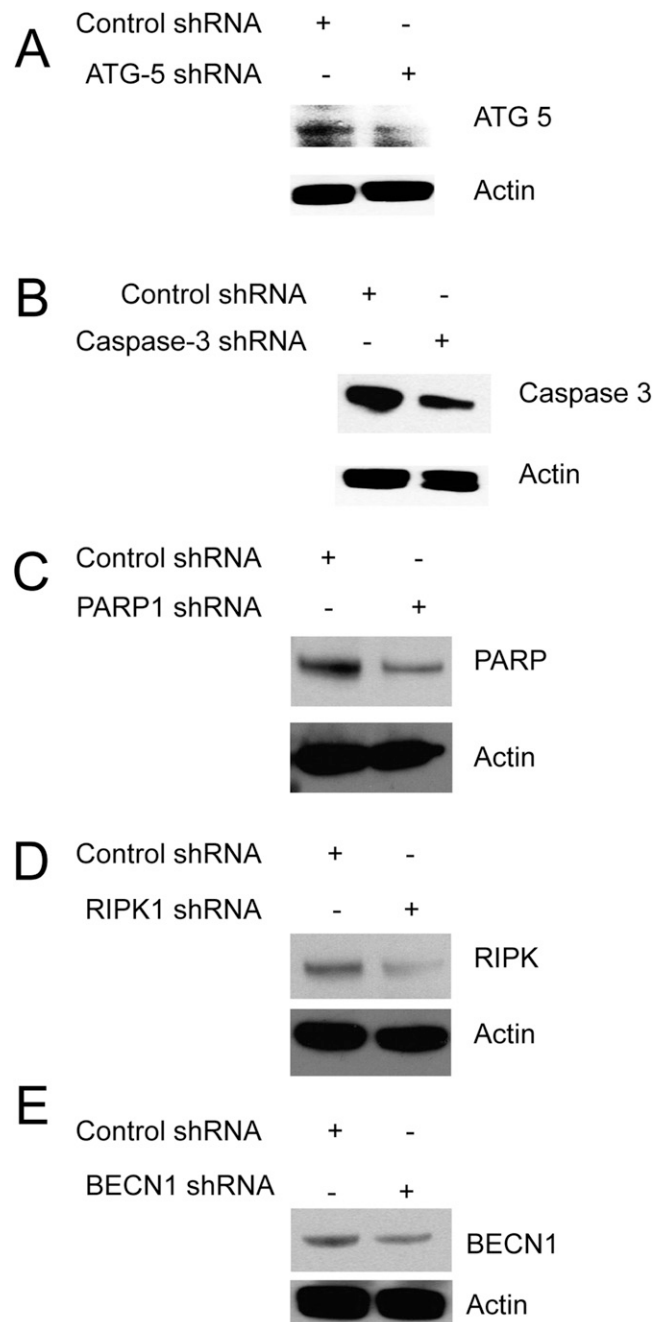


Fig. S3. Immunoblot assessment of the knockdown efficiency of ATG5, Caspase 3, PARP-1, RIPK1, and BECN-1 (A–E) in cortical cultures. Each immunoblot is representative of three experiments.