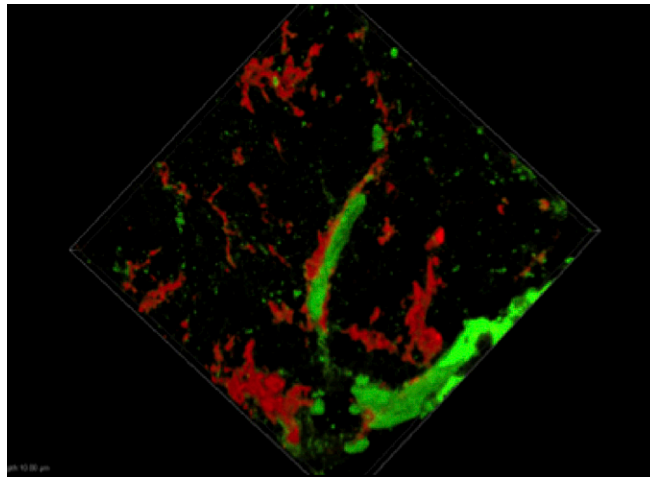


# Supporting Information

Zhang et al. 10.1073/pnas.1615036114



**Movie S1.** Perivascular signals of 5D4-reactive KS in J20 AD mouse model brain. Cryostat-cut brain sections from J20 mice were stained with 5D4 anti-KS (red) and an antibody against laminin, a marker of vasculature basement membrane (green). A representative image of Z-stack confocal microscopy in the hippocampus is shown ( $n = 3$ , 18–24 mo old) (width, 109.81  $\mu\text{m}$ ; height, 109.81  $\mu\text{m}$ ; depth, 10  $\mu\text{m}$ ), related to Fig. 2C.

[Movie S1](#)

## Other Supporting Information Files

[SI Appendix \(PDF\)](#)