

Supporting Information

Chai et al. 10.1073/pnas.1014892107

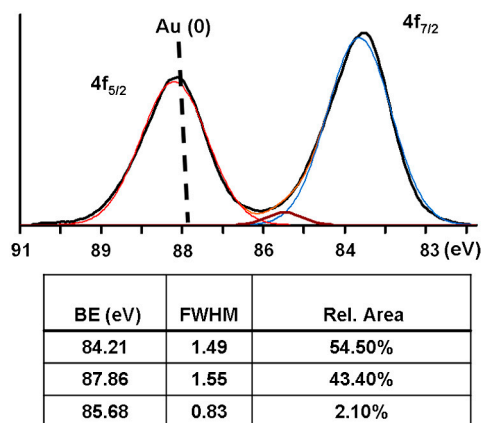


Fig. S1. X-ray photoelectron spectroscopy spectra of the gold nanoparticles. The particles formed in the poly(ethylene oxide)-*b*-poly(2-vinylpyridine) block copolymers after plasma treatment indicates the presence of gold metal.

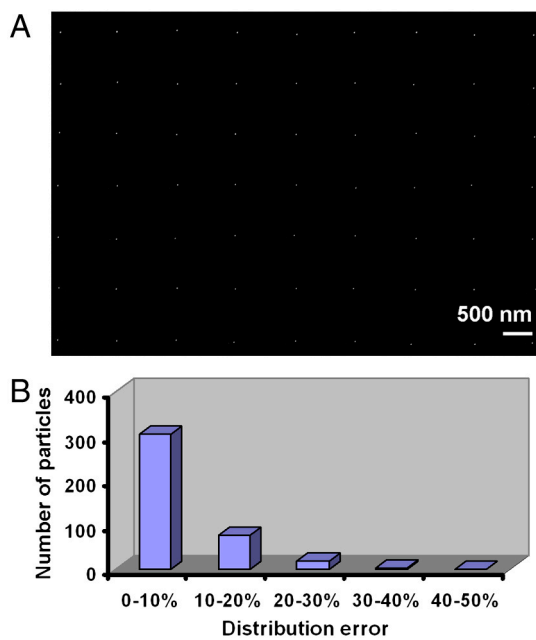


Fig. S2. Large array of single Au nanoparticles and registry analysis. (A) SEM image shows high yield of single nanoparticles in each patterned block copolymer-metal precursor feature. (B) Registry analysis of 400 particle features over different areas. The distribution error is defined as the ratio of the distance of the particle away from the center of the block copolymer feature to the feature diameter.

