

Supporting Information

Ruan et al. 10.1073/pnas.1215274109

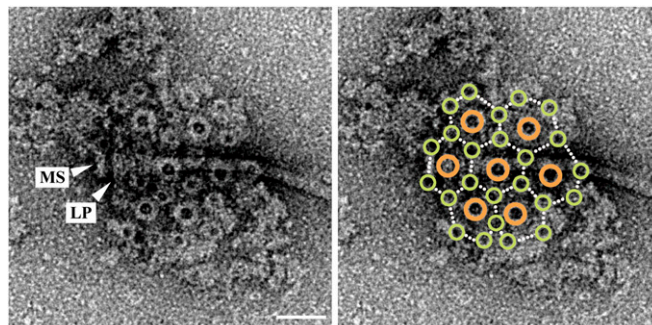
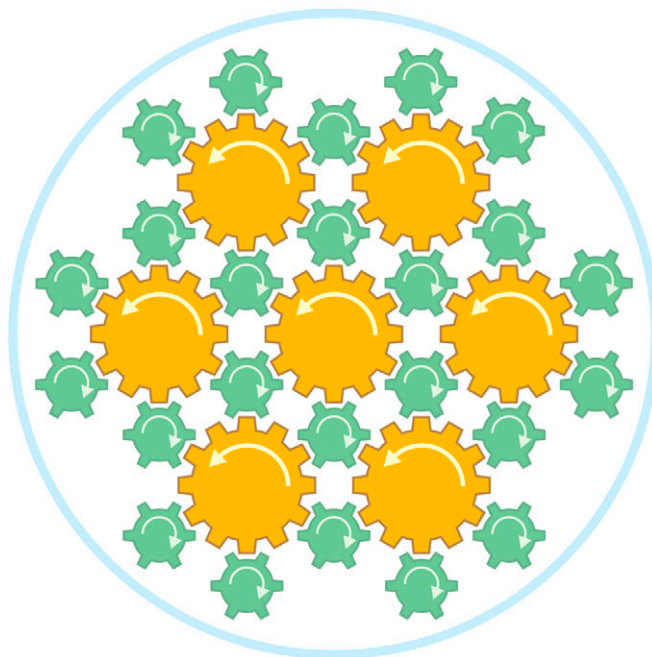


Fig. S1. Another example of an electron microscopy image showing the intertwined hexagonal array of the basal bodies of 7 flagella and 24 fibrils. One of the seven flagella remains attached in this particular case, with the attached one laid down on the carbon support but with its basal body approximately in the original position within the intertwined hexagonal array. The L, P, and MS rings are indicated. (Scale bar, 50 nm.)



Movie S1. Schematic model of 7 flagella and 24 fibrils rotating in a tight bundle smoothly within the sheath by the counter rotation of neighboring flagella and fibrils.

[Movie S1](#)